

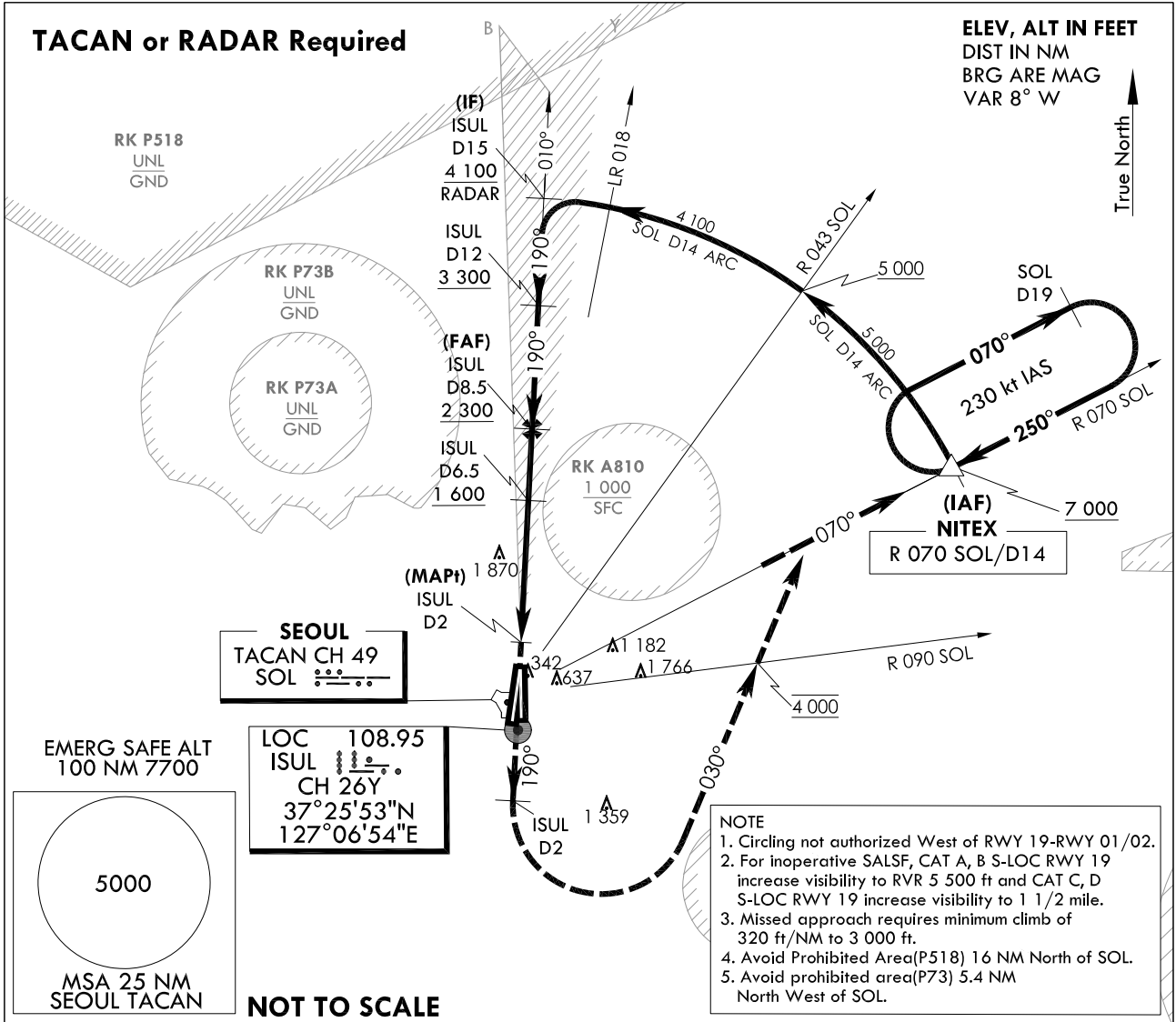
**INSTRUMENT
APPROACH
CHART**

AERODROME ELEV 93 ft
HEIGHTS RELATED TO
THR RWY 19 - ELEV 68 ft

SEOUL APP 123.8 363.8
SEOUL TWR 126.2
234.5 236.6

SEOUL/Seoul(RKSM)
LOC/DME Y
RWY 19

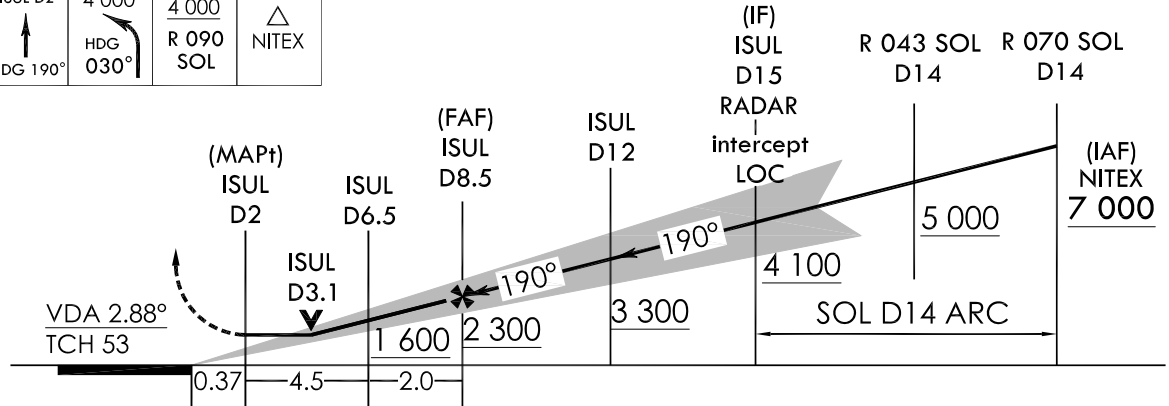
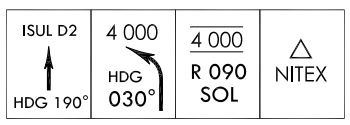
Note : Approach and Circle to land under U.S. TERPS.



TRANSITION ALT 14 000
TRANSITION LVL FL 140

Missed Approach Climb Rate table

KNOTS	60	120	180	240	300	TO
V/V(fpm)	320	640	960	1 280	1 590	3 000



CATEGORY	A	B	C	D	E
S-LOC RWY 19	600 / 40 528 (600 - 3/4)		600 - 1/4 528 (600 - 1/4)		N/A
Circling	1 020 - 1/4 927(1 000-1/4)		1 560 - 3 1 467(1 500-3)	2 260 - 3 2 167(2 200-3)	N/A

MISSED APPROACH
Climb HDG 190° to ISUL 2 DME and climbing left turn HDG 030° to cross R 090 SOL at 4 000 ft, then R 070 SOL to NITEX and hold, continue climb-in-holding to 7 000 ft.

Change : Information of fix name(HANJI → NITEX).

INTENTIONALLY

LEFT

BLANK

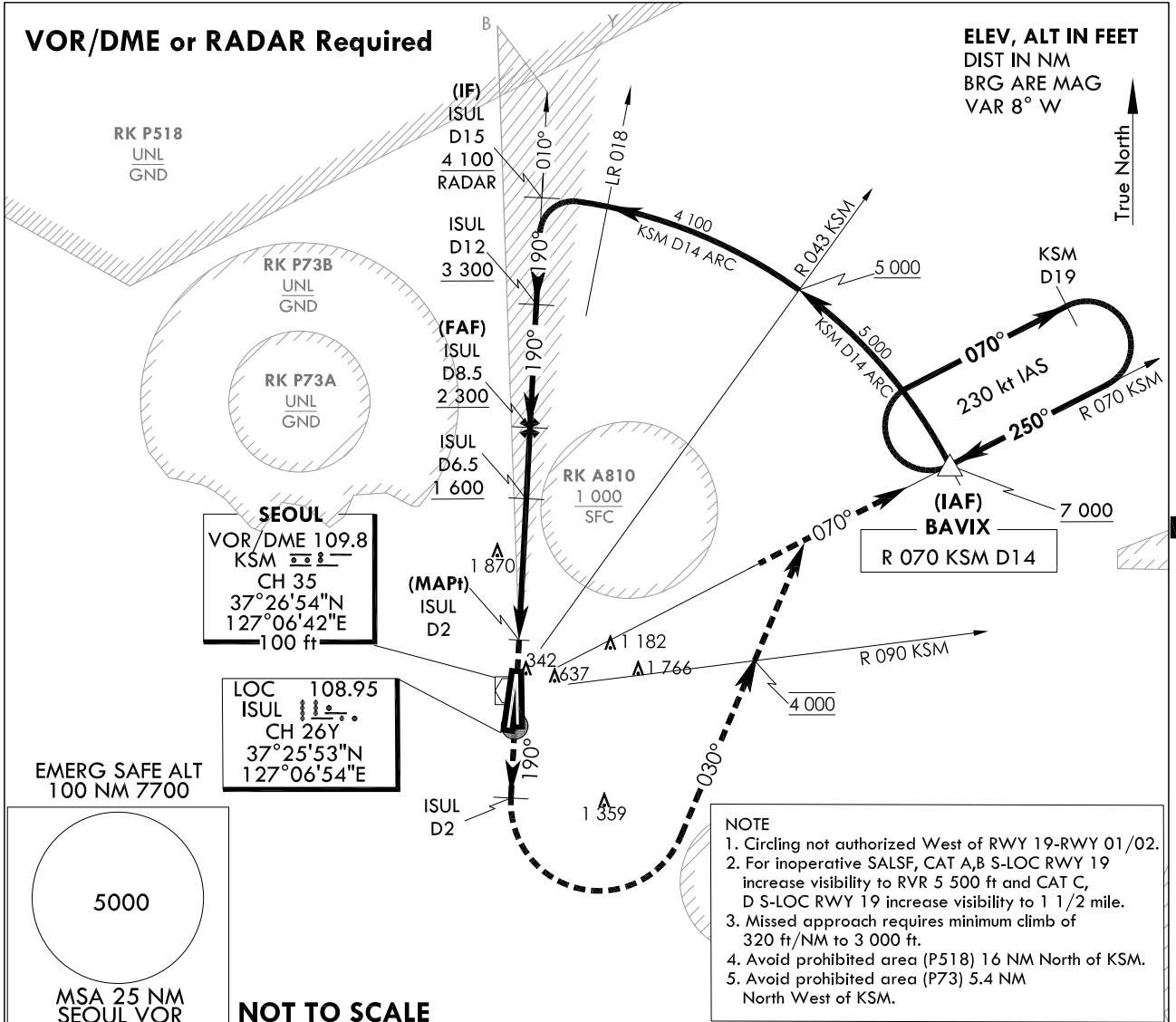
**INSTRUMENT
APPROACH
CHART**

AERODROME ELEV 93 ft
HEIGHTS RELATED TO
THR RWY 19 - ELEV 68 ft

SEOUL APP 123.8 363.8
SEOUL TWR 126.2
234.5 236.6

SEOUL/Seoul(RKSM)
LOC/DME Y
RWY 19

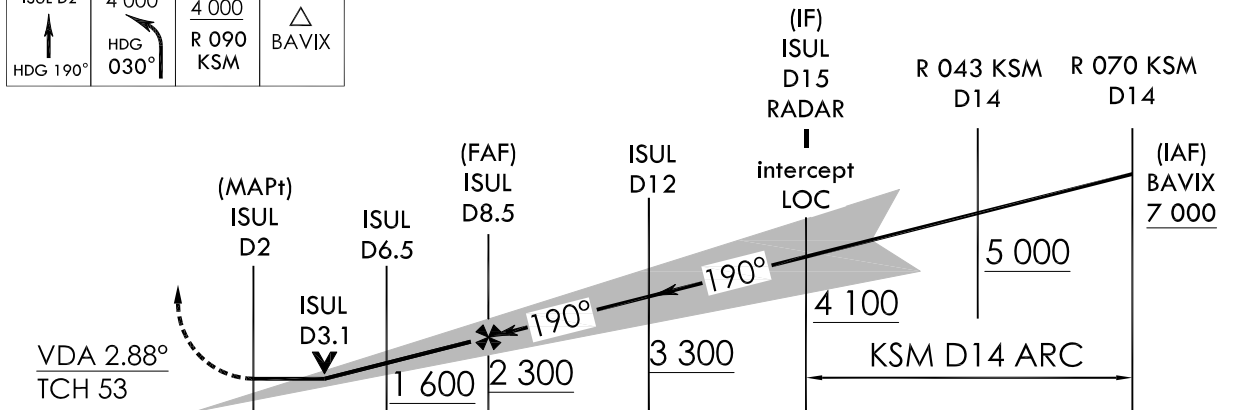
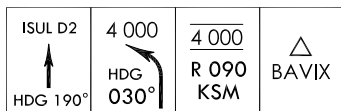
Note : Approach and Circle to land under U.S. TERPS.



TRANSITION ALT 14 000
TRANSITION LVL FL 140

Missed Approach Climb Rate table

KNOTS	60	120	180	240	300	TO
V/V(fpm)	320	640	960	1 280	1 590	3 000



CATEGORY	A	B	C	D	E
S-LOC RWY 19	600 / 40 528 (600 - 3/4)		600 - 1/4	528 (600 - 1/4)	N/A
Circling	1 020 - 1 1/4 927(1 000-1 1/4)		1 560 - 3 1 467(1 500-3)	2 260 - 3 2 167(2 200-3)	N/A

MISSED APPROACH
Climb HDG 190° to ISUL 2 DME and climbing left turn HDG 030° to cross R 090 KSM at 4 000 ft, then R 070 KSM to BAVIX and hold, continue climb-in-holding to 7 000 ft.

Change : Information of fix name(ROONI → BAVIX).

INTENTIONALLY

LEFT

BLANK

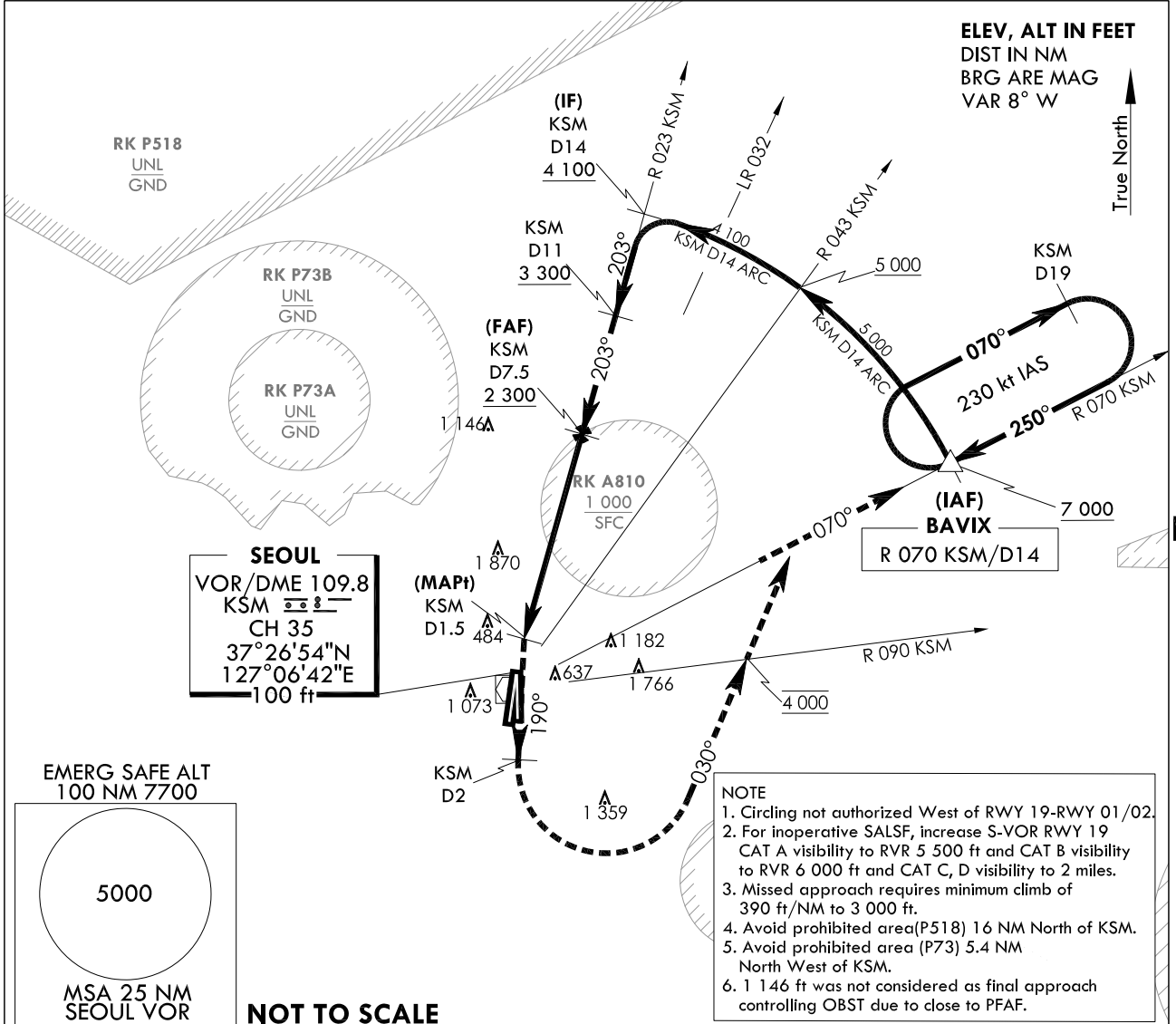
**INSTRUMENT
APPROACH
CHART**

AERODROME ELEV 93 ft
HEIGHTS RELATED TO
THR RWY 19 - ELEV 68 ft

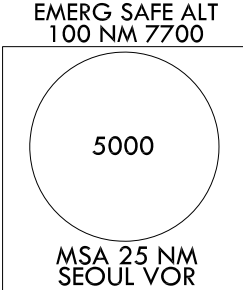
SEOUL APP 123.8 363.8
SEOUL TWR 126.2
234.5 236.6

SEOUL/Seoul(RKSM)
VOR/DME
RWY 19

Note : Approach and Circle to land under U.S. TERPS.



SEOUL
VOR/DME 109.8
KSM 2
CH 35
37°26'54"N
127°06'42"E
100 ft

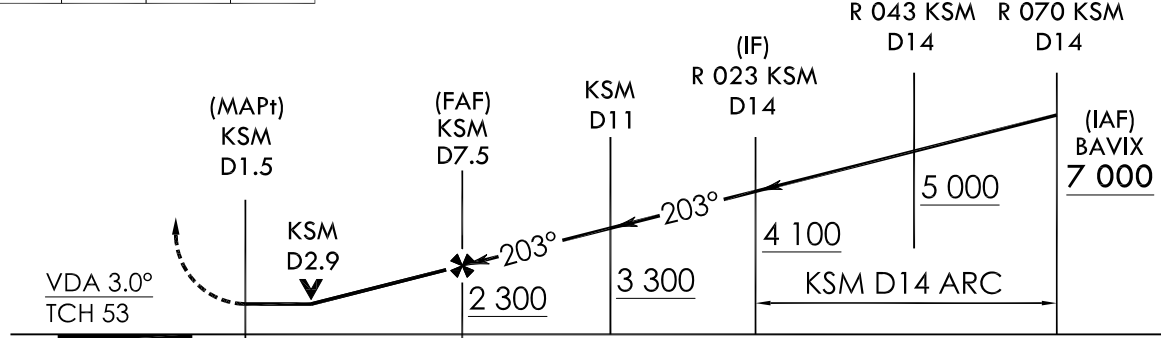
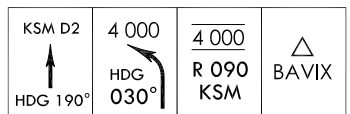


- NOTE**
1. Circling not authorized West of RWY 19-RWY 01/02.
 2. For inoperative SALSF, increase S-VOR RWY 19 CAT A visibility to RVR 5 500 ft and CAT B visibility to RVR 6 000 ft and CAT C, D visibility to 2 miles.
 3. Missed approach requires minimum climb of 390 ft/NM to 3 000 ft.
 4. Avoid prohibited area(P518) 16 NM North of KSM.
 5. Avoid prohibited area (P73) 5.4 NM North West of KSM.
 6. 1 146 ft was not considered as final approach controlling OBST due to close to PFAF.

TRANSITION ALT 14 000
TRANSITION LVL FL 140

Missed Approach Climb Rate table

KNOTS	60	120	180	240	300	TO
V/V(fpm)	390	770	1 150	1 530	1 910	3 000



CATEGORY	A	B	C	D	E
S-VOR RWY 19	820 / 40 748 (800 - 3/4)	820 / 55 748 (800 - 1)	820 - 1 7/8 748 (800 - 1 7/8)		N/A
Circling	1 020 - 1 1/4 927(1 000-1 1/4)		1 560 - 3 1 467(1 500-3)	2 260 - 3 2 167(2 200-3)	N/A

MISSED APPROACH
Climb HDG 190° to KSM 2 DME and climbing left turn HDG 030° to cross R 090 KSM at 4 000 ft, then R 070 KSM to BAVIX and hold, continue climb-in-holding to 7 000 ft.

Change : Information of fix name(ROONI → BAVIX).

INTENTIONALLY

LEFT

BLANK

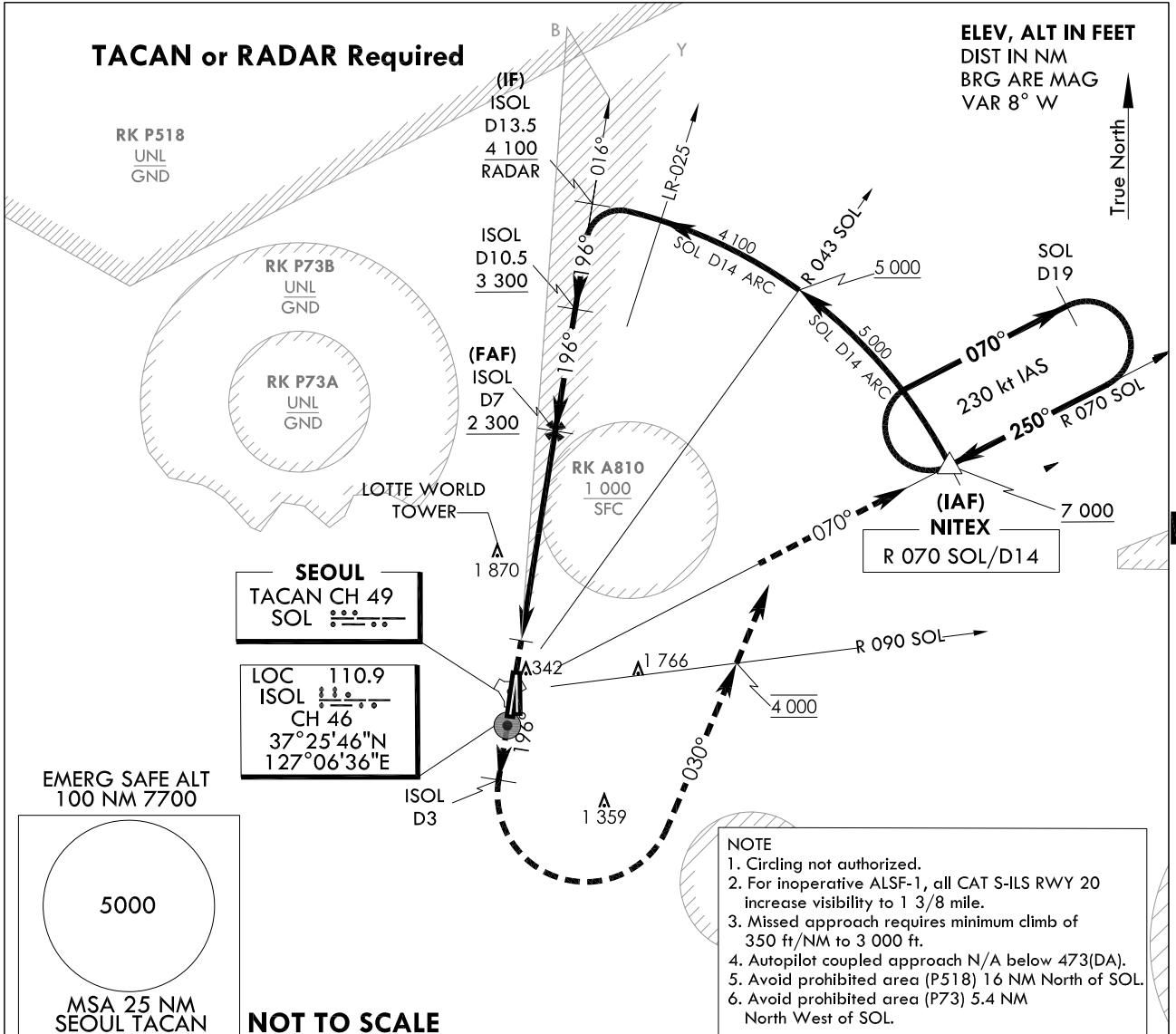
**INSTRUMENT
APPROACH
CHART**

AERODROME ELEV 93 ft
HEIGHTS RELATED TO
THR RWY 20 - ELEV 68 ft
HIGHEST ELEV TDZ 69 ft

SEOUL APP 123.8 363.8
SEOUL TWR 126.2
234.5 236.6

SEOUL/Seoul(RKSM)
ILS Z
RWY 20

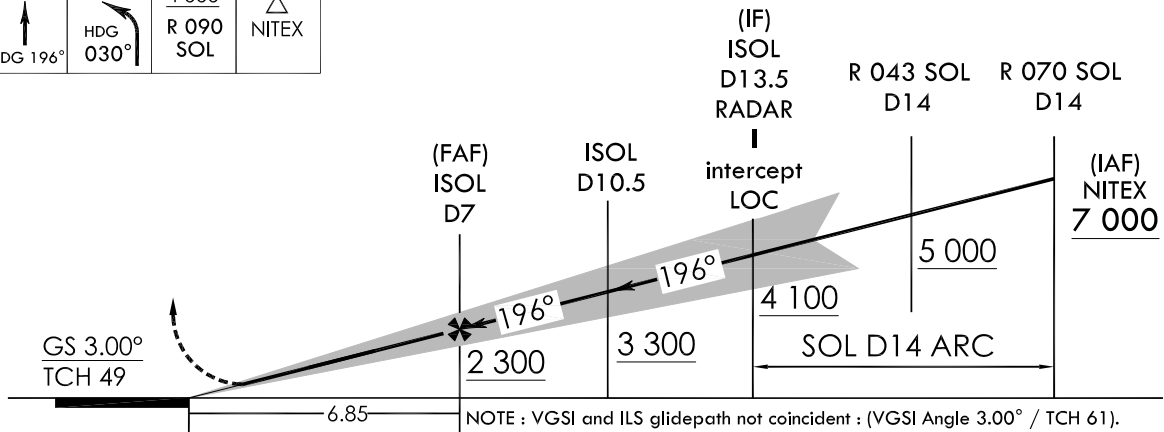
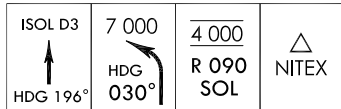
Note : Approach and Circle to land under U.S. TERPS.



TRANSITION ALT 14 000
TRANSITION LVL FL 140

Missed Approach Climb Rate table

KNOTS	60	120	180	240	300	TO
V/V(fpm)	350	700	1 050	1 400	1 750	3 000



CATEGORY	A	B	C	D	E
S-ILS RWY 20		473 / 45	404 (400 - 7/8)		N/A

MISSED APPROACH
Climb HDG 196° to ISOL 3 DME and climbing left turn HDG 030° to cross R 090 SOL at 4 000 ft, then R 070 SOL to NITEX and hold, continue climb-in-holding to 7 000 ft.

Change : Information of fix name(HANJI → NITEX).

INTENTIONALLY

LEFT

BLANK

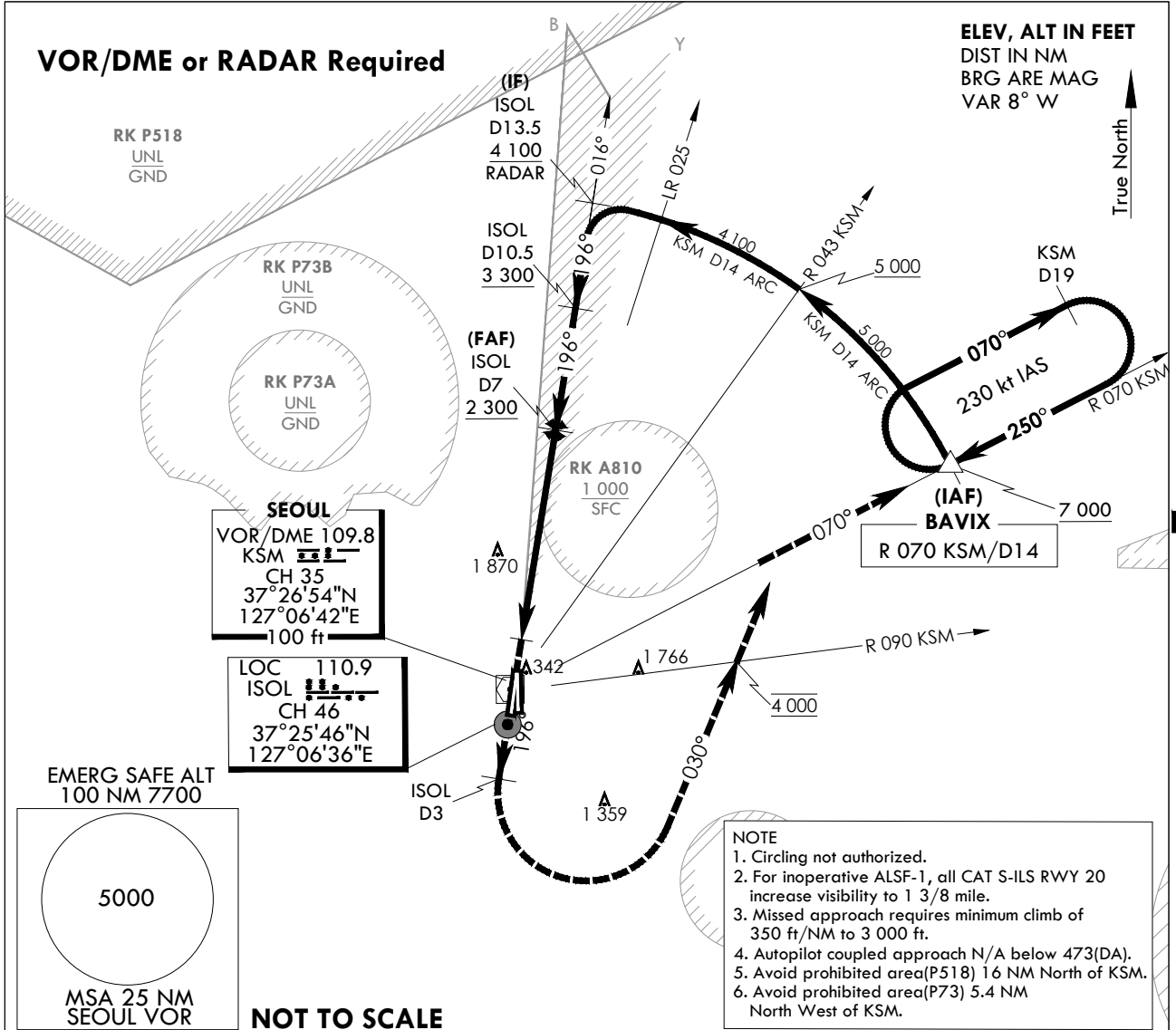
**INSTRUMENT
APPROACH
CHART**

AERODROME ELEV 93 ft
HEIGHTS RELATED TO
THR RWY 20 - ELEV 68 ft
HIGHEST ELEV TDZ 69 ft

SEOUL APP 123.8 363.8
SEOUL TWR 126.2
234.5 236.6

SEOUL/Seoul(RKSM)
ILS Y
RWY 20

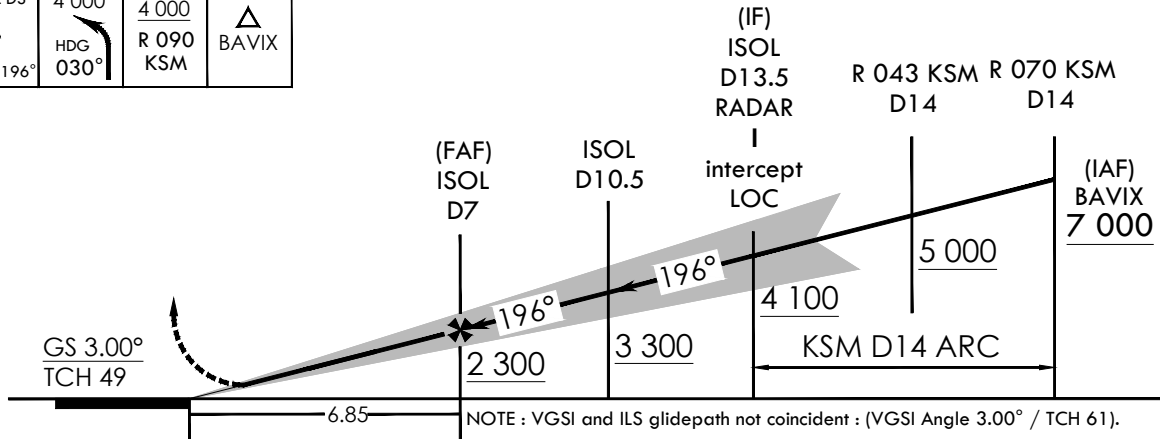
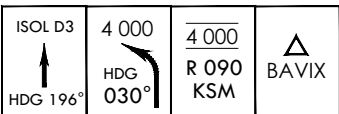
Note : Approach and Circle to land under U.S. TERPS.



TRANSITION ALT 14 000
TRANSITION LVL FL 140

Missed Approach Climb Rate table

KNOTS	60	120	180	240	300	TO
V/V(fpm)	350	700	1 050	1 400	1 750	3 000



CATEGORY	A	B	C	D	E
S-ILS RWY 20		473 / 45	404 (400 - 7/8)		N/A

MISSED APPROACH
Climb HDG 196° to ISOL 3 DME and climbing left turn HDG 030° to cross R 090 KSM at 4 000 ft, then R 070 KSM to BAVIX and hold, continue climb-in-holding to 7 000 ft.

Change : Information of fix name(ROONI → BAVIX).

INTENTIONALLY

LEFT

BLANK

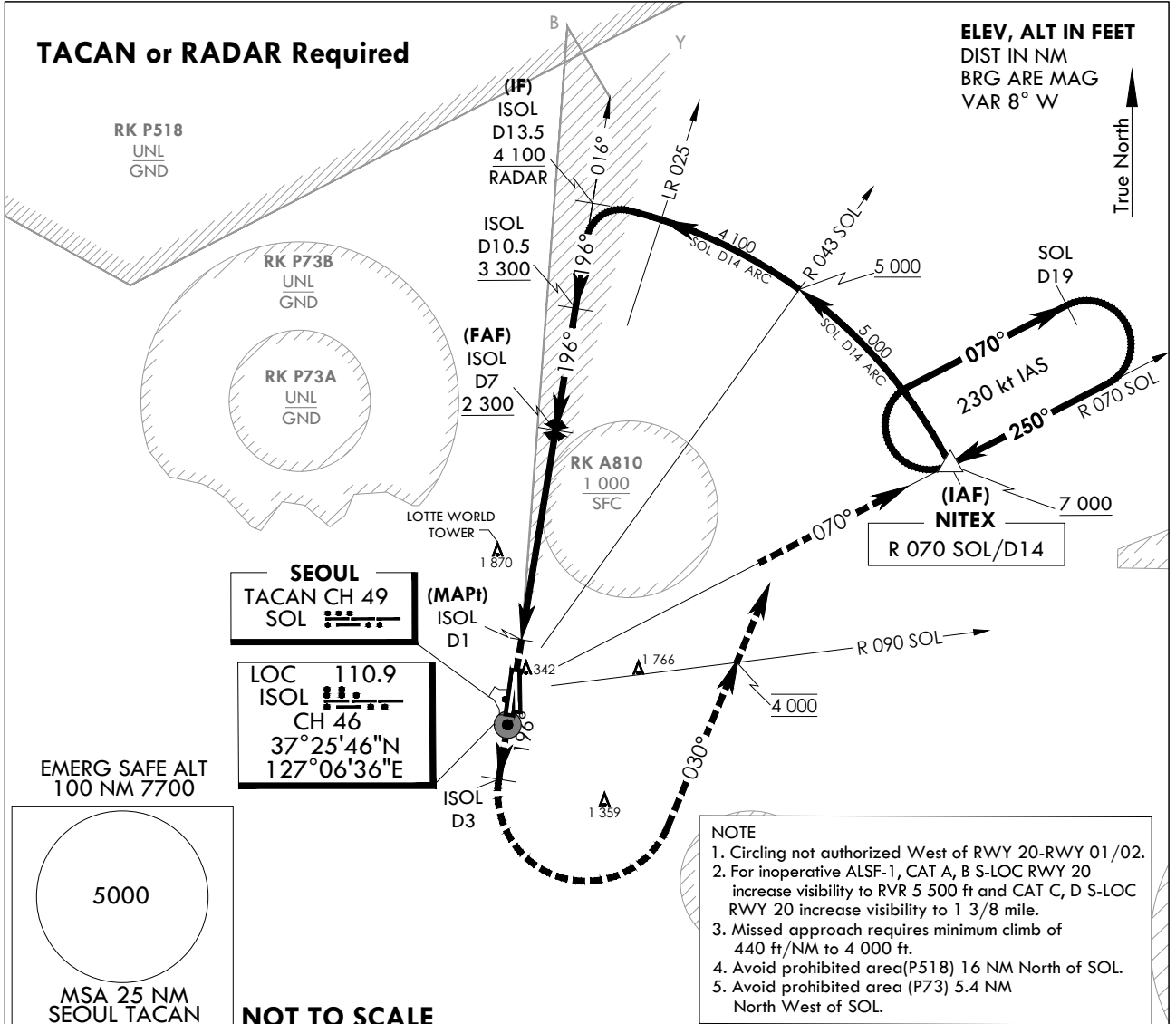
**INSTRUMENT
APPROACH
CHART**

AERODROME ELEV 93 ft
HEIGHTS RELATED TO
THR RWY 20 - ELEV 68 ft
HIGHEST ELEV TDZ 69 ft

SEOUL APP 123.8 363.8
SEOUL TWR 126.2
234.5 236.6

SEOUL/Seoul(RKSM)
LOC/DME Z
RWY 20

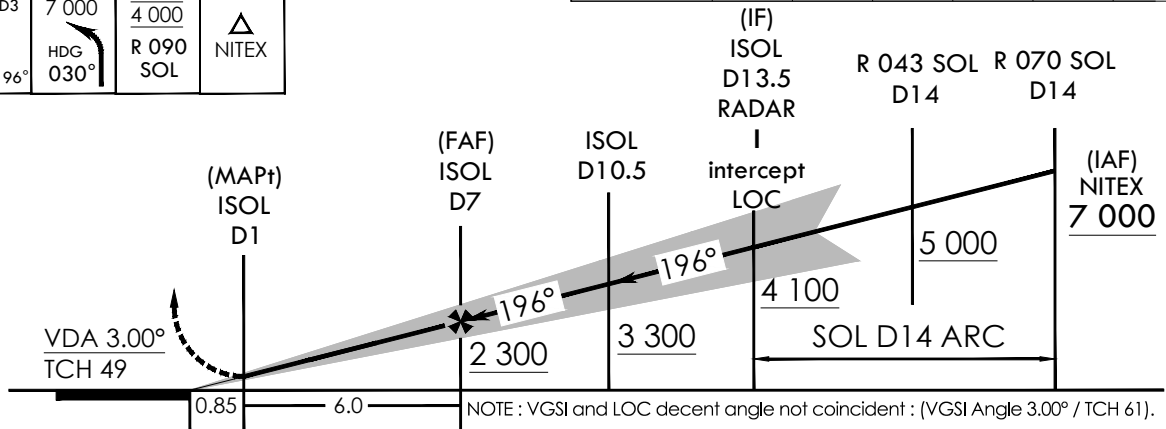
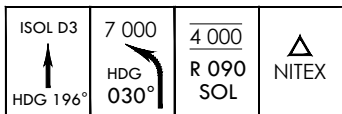
Note : Approach and Circle to land under U.S. TERPS.



TRANSITION ALT 14 000
TRANSITION LVL FL 140

Missed Approach Climb Rate table

KNOTS	60	120	180	240	300	TO
V/V(fpm)	440	880	1 320	1 760	2 200	4 000



CATEGORY	A	B	C	D	E
S-LOC RWY 20	520 / 35 451 (500 - 5/8)		520 - 45 451 (500 - 5/8)		N/A
Circling	1 020 - 1 1/4 927(1 000-1 1/4)		1 560 - 3 1 467(1 500-3)	2 260 - 3 2 167(2 200-3)	N/A

MISSED APPROACH

Climb HDG 196° to ISOL 3 DME and climbing left turn HDG 030° to cross R 090 SOL at 4 000 ft, then R 070 SOL to NITEX and hold, continue climb-in-holding to 7 000 ft.

Change : Information of fix name(HANJI → NITEX).

INTENTIONALLY

LEFT

BLANK

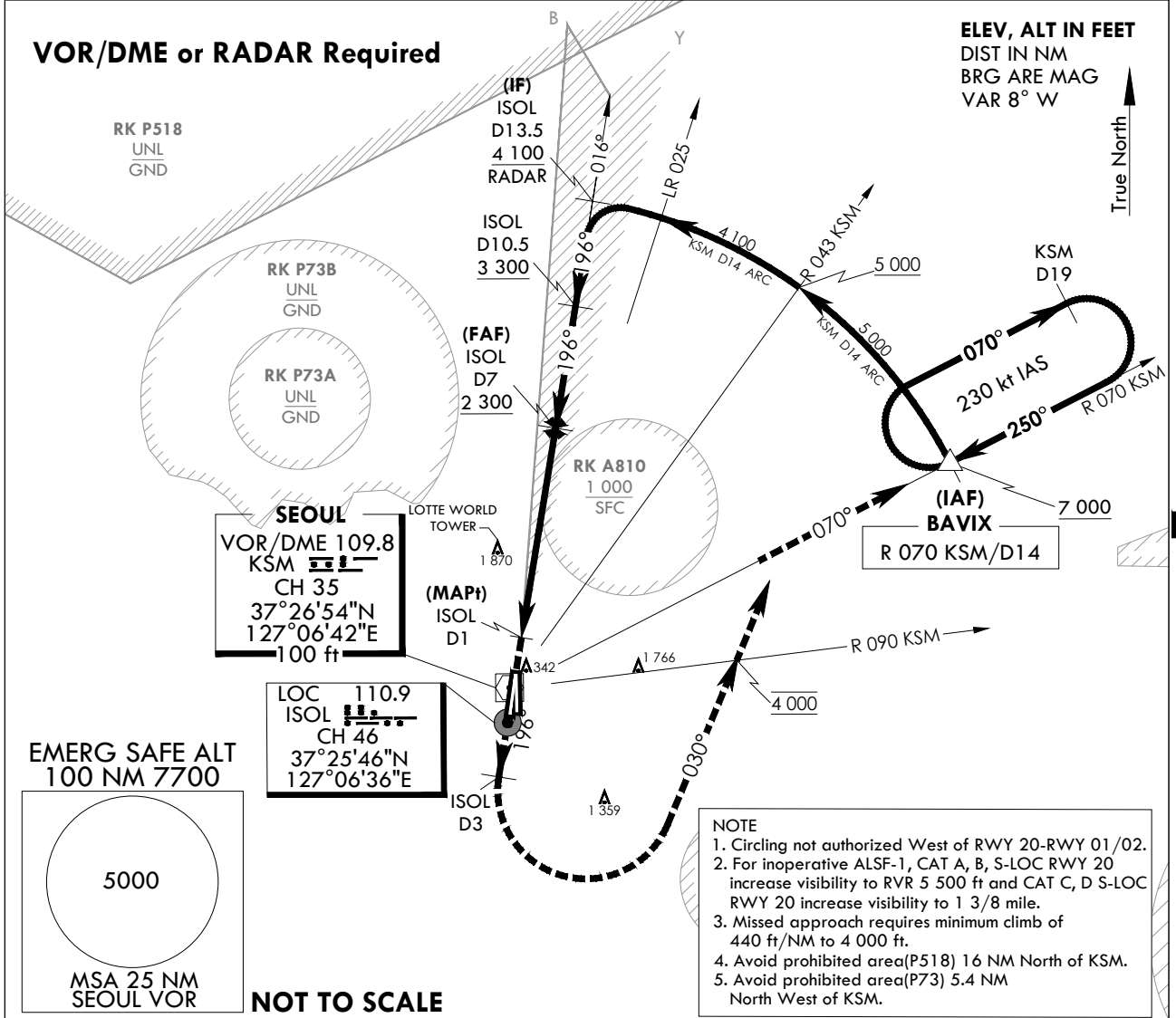
**INSTRUMENT
APPROACH
CHART**

AERODROME ELEV 93 ft
HEIGHTS RELATED TO
THR RWY 20 - ELEV 68 ft
HIGHEST ELEV TDZ 69 ft

SEOUL APP 123.8 363.8
SEOUL TWR 126.2
234.5 236.6

**SEOUL/Seoul(RKSM)
LOC/DME Y
RWY 20**

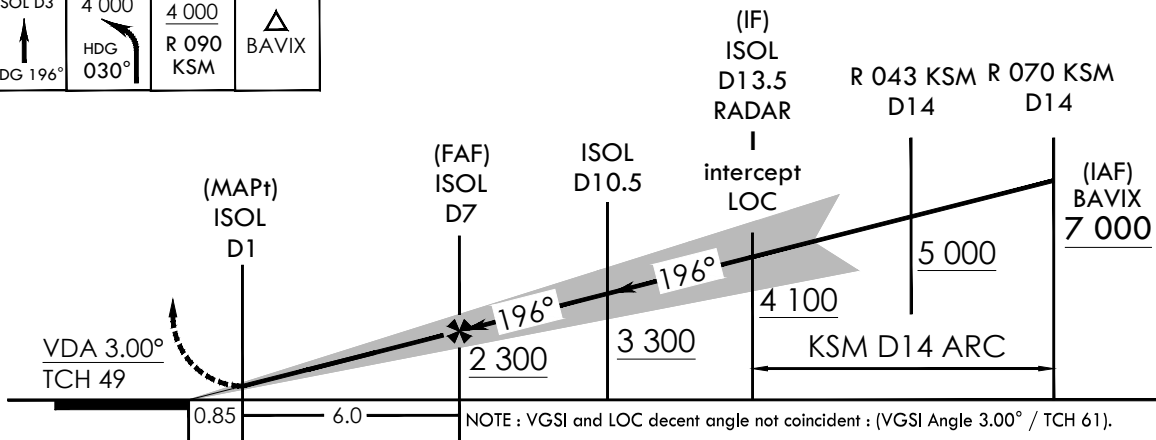
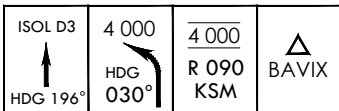
Note : Approach and Circle to land under U.S. TERPS.



TRANSITION ALT 14 000
TRANSITION LVL FL 140

Missed Approach Climb Rate table

KNOTS	60	120	180	240	300	TO
V/V(fpm)	440	880	1 320	1 760	2 200	4 000



NOTE : VGSI and LOC decent angle not coincident : (VGSI Angle 3.00° / TCH 61).

CATEGORY	A	B	C	D	E
S-LOC RWY 20	520 / 35 451 (500 - 5/8)		520 - 45 451 (500 - 7/8)		N/A
Circling	1 020 - 1 1/4 927(1 000-1 1/4)		1 560 - 3 1 467(1 500-3)	2 260 - 3 2 167(2 200-3)	N/A

MISSED APPROACH

Climb HDG 196° to ISOL 3 DME and climbing left turn HDG 030° to cross R 090 KSM at 4 000 ft, then R 070 KSM to BAVIX and hold, continue climb-in-holding to 7 000 ft.

Change : Information of fix name(ROONI → BAVIX).

INTENTIONALLY

LEFT

BLANK

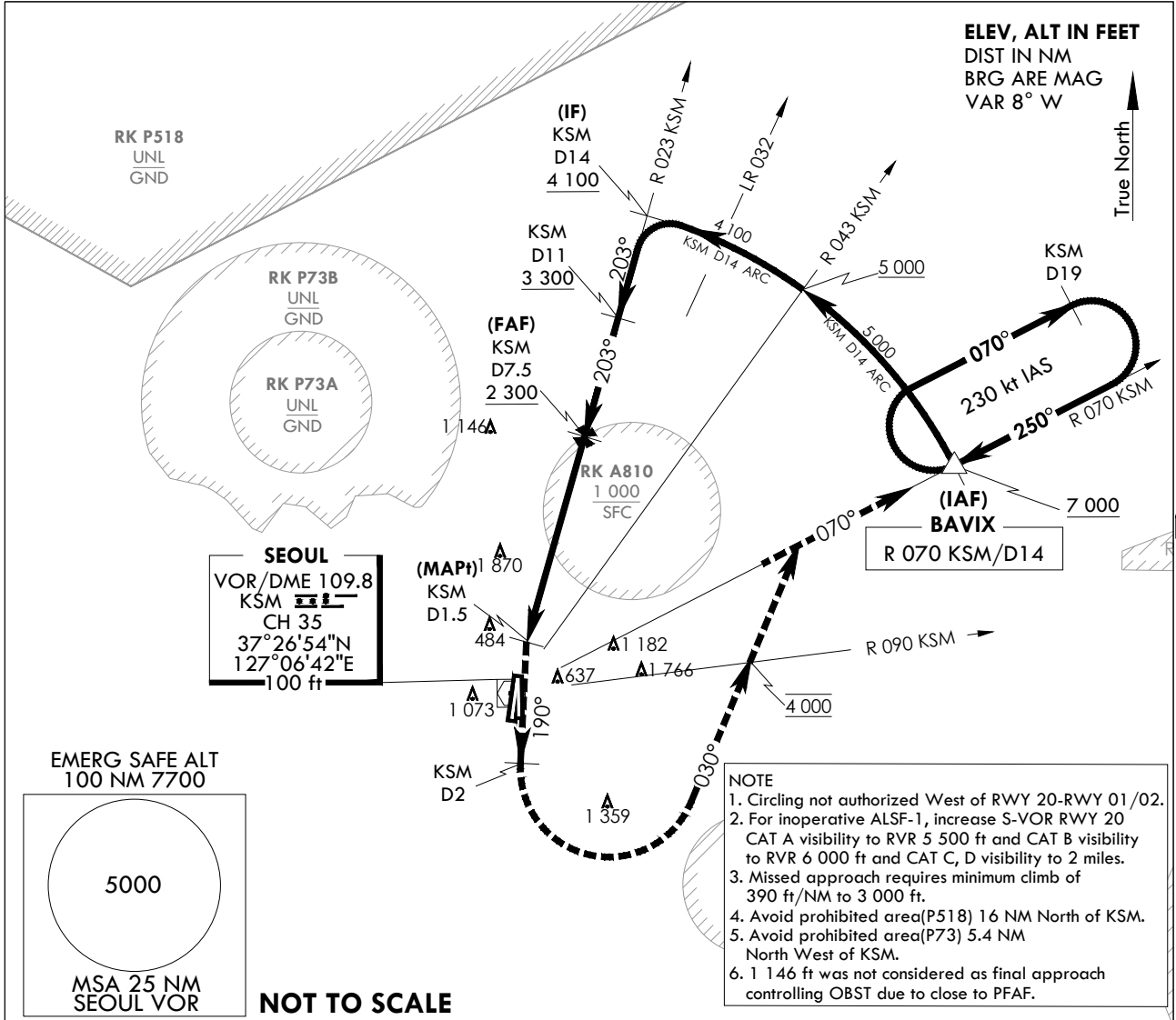
INSTRUMENT APPROACH CHART

AERODROME ELEV 93 ft
HEIGHTS RELATED TO
THR RWY 20 - ELEV 68 ft
HIGHEST ELEV TDZ 69 ft

SEOUL APP	123.8	363.8
SEOUL TWR	126.2	
	234.5	236.6

SEOUL/Seoul(RKSM)
VOR/DME
RWY 20

Note : Approach and Circle to land under U.S. TERPS.

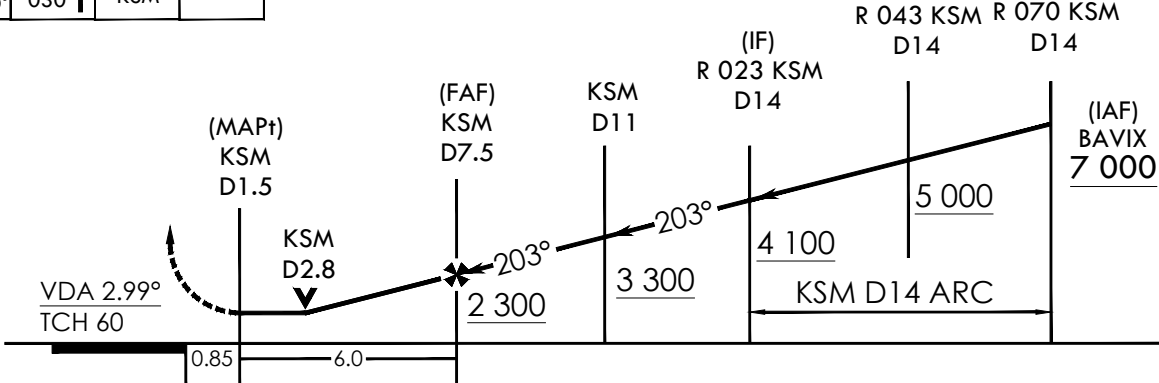


- NOTE**
1. Circling not authorized West of RWY 20-RWY 01/02.
 2. For inoperative ALSF-1, increase S-VOR RWY 20 CAT A visibility to RVR 5 500 ft and CAT B visibility to RVR 6 000 ft and CAT C, D visibility to 2 miles.
 3. Missed approach requires minimum climb of 390 ft/NM to 3 000 ft.
 4. Avoid prohibited area(P518) 16 NM North of KSM.
 5. Avoid prohibited area(P73) 5.4 NM North West of KSM.
 6. 1 146 ft was not considered as final approach controlling OBST due to close to PFAF.

TRANSITION ALT 14 000
TRANSITION LVL FL 140

Missed Approach Climb Rate table

KNOTS	60	120	180	240	300	TO
V/V(fpm)	390	770	1 150	1 530	1 910	3 000



CATEGORY	A	B	C	D	E
S-VOR RWY 20	820 / 35 751 (800 - 5/8)	820 / 40 751 (800 - 3/4)	820 - 1 3/4 751 (800 - 1 3/4)		N/A
Circling	1 020 - 1 1/4 927(1 000-1 1/4)		1 560 - 3 1 467(1 500-3)	2 260 - 3 2 167(2 200-3)	N/A

MISSED APPROACH
Climb HDG 190° to KSM 2 DME and climbing left turn HDG 030° to cross R 090 KSM at 4 000 ft, then R 070 KSM to BAVIX and hold, continue climb-in-holding to 7 000 ft.

Change : Information of fix name(ROONI → BAVIX).

INTENTIONALLY

LEFT

BLANK

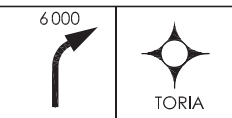
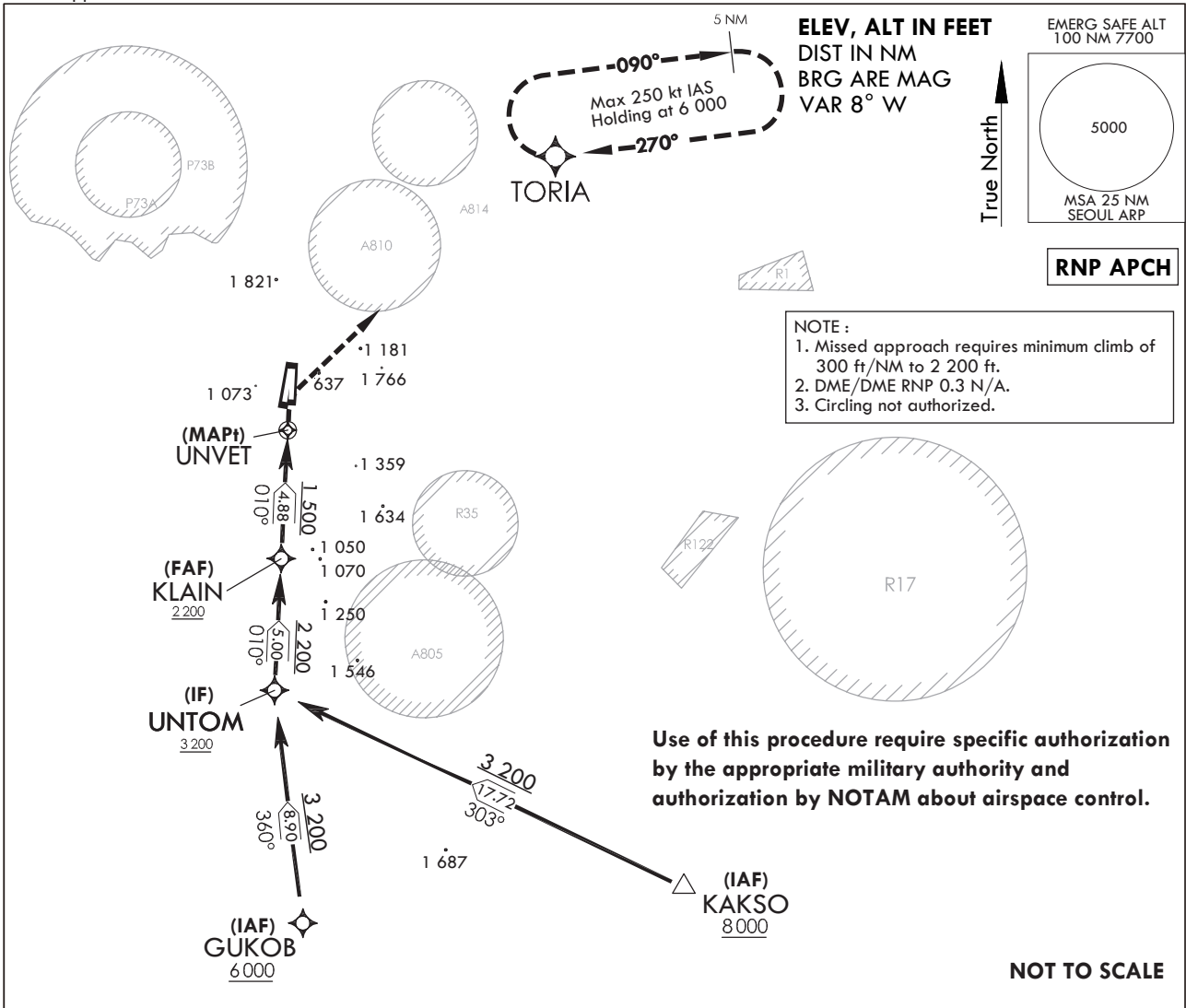
**INSTRUMENT
APPROACH
CHART**

AERODROME ELEV **94** ft
HEIGHTS RELATED TO
THR RWY 01 - ELEV **78** ft

SEOUL APP 123.8 363.8
SEOUL TWR 126.2
236.6 234.5

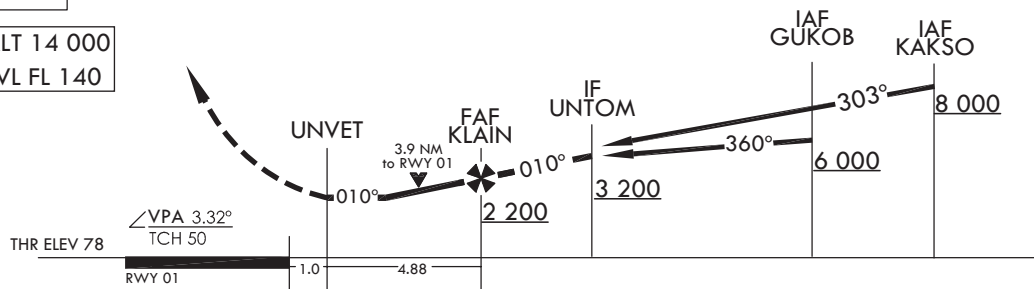
SEOUL/Seoul (RKSM)
RNP RWY 01

Note : Approach and Circle to land under U.S TERPS.



MISSED APPROACH
Climbing right turn 6 000 ft direct TORIA and hold.

TRANSITION ALT 14 000
TRANSITION LVL FL 140



CATEGORY	A	B	C	D	E
LNAV/ VNAV DA	N/A				
LNAV	1 500-1¼ 1 422(1 500-1¼)	1 500-1½ 1 422(1 500-1½)	1 500-3 1 422(1 500-3)		N/A
CIRCLING	N/A				

Change : Information of fix name(QUINS → GUKOB).

AERONAUTICAL DATA TABULATION

Instrument Approach Procedure Coding Tables

I RNP RWY 01 (From GUKOB)

Serial Number	Path Descriptor	Waypoint Identifier	Fly -Over	Course/Track ° M(° T)	Distance (NM)	Turn Direction	Altitude (ft)	Speed (kt)	Coordinates	VPA /TCH	Navigation specification	Remarks
001	IF	GUKOB	-	-	-	-	+6 000	-	37°06'20.2845"N 127°08'01.92225"E	-	RNP APCH	IAF
002	TF	UNTOM	-	359.9/351.9	8.9	-	+3 200	-	37°15'09.3930"N 127°06'28.1856"E	-	RNP APCH	IF
003	TF	KLAIN	-	9.8/1.8	5	-	+2 200	-	37°20'09.6309"N 127°06'39.9962"E	-	RNP APCH	FAF
004	TF	UNVET	Y	9.8/1.8	4.88	-	+1 500	-	37°25'02.5948"N 127°06'51.5321"E	3.32°/50	RNP APCH	MAPt
005	DF	TORIA	-	-	-	R	6 000	-	37°38'02.3748"N 127°21'30.6133"E	-	RNP APCH	-
006	HM	TORIA	-	270.0/262.0	5	R	@6 000	-250	37°38'02.3748"N 127°21'30.6133"E	-	RNP APCH	HOLDING 5 NM LEG

RNP RWY 01 (From KAKSO)

Serial Number	Path Descriptor	Waypoint Identifier	Fly -Over	Course/Track ° M(° T)	Distance (NM)	Turn Direction	Altitude (ft)	Speed (kt)	Coordinates	VPA /TCH	Navigation specification	Remarks
001	IF	KAKSO	-	-	-	-	+8 000	-	37°07'45"N 127°26'37"E	-	RNP APCH	IAF
002	TF	UNTOM	-	302.8/294.8	17.72	-	+3 200	-	37°15'09.3930"N 127°06'28.1856"E	-	RNP APCH	IF
003	TF	KLAIN	-	9.8/1.8	5	-	+2 200	-	37°20'09.6309"N 127°06'39.9962"E	-	RNP APCH	FAF
004	TF	UNVET	Y	9.8/1.8	4.88	-	+1 500	-	37°25'02.5948"N 127°06'51.5321"E	3.32°/50	RNP APCH	MAPt
005	DF	TORIA	-	-	-	R	6 000	-	37°38'02.3748"N 127°21'30.6133"E	-	RNP APCH	-
006	HM	TORIA	-	270.0/262.0	5	R	@6 000	-250	37°38'02.3748"N 127°21'30.6133"E	-	RNP APCH	HOLDING 5 NM LEG

Change : Information of fix name(QUINS → GUKOB).

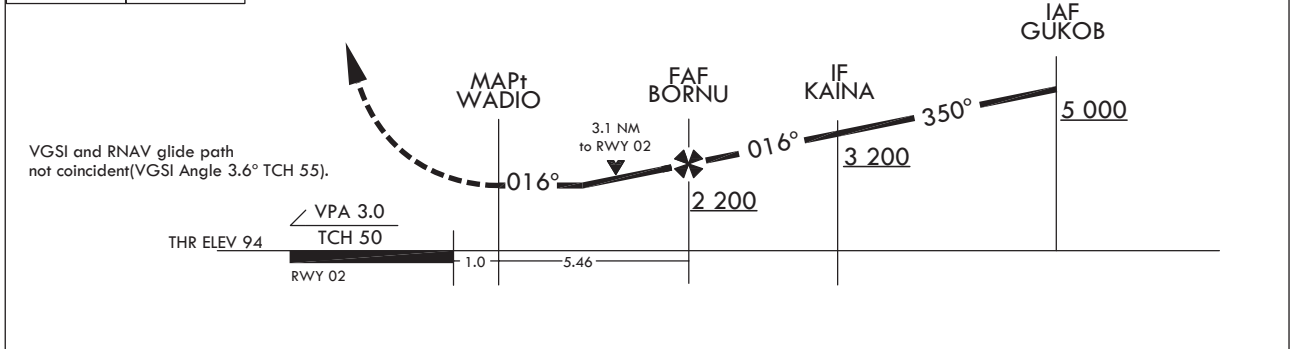
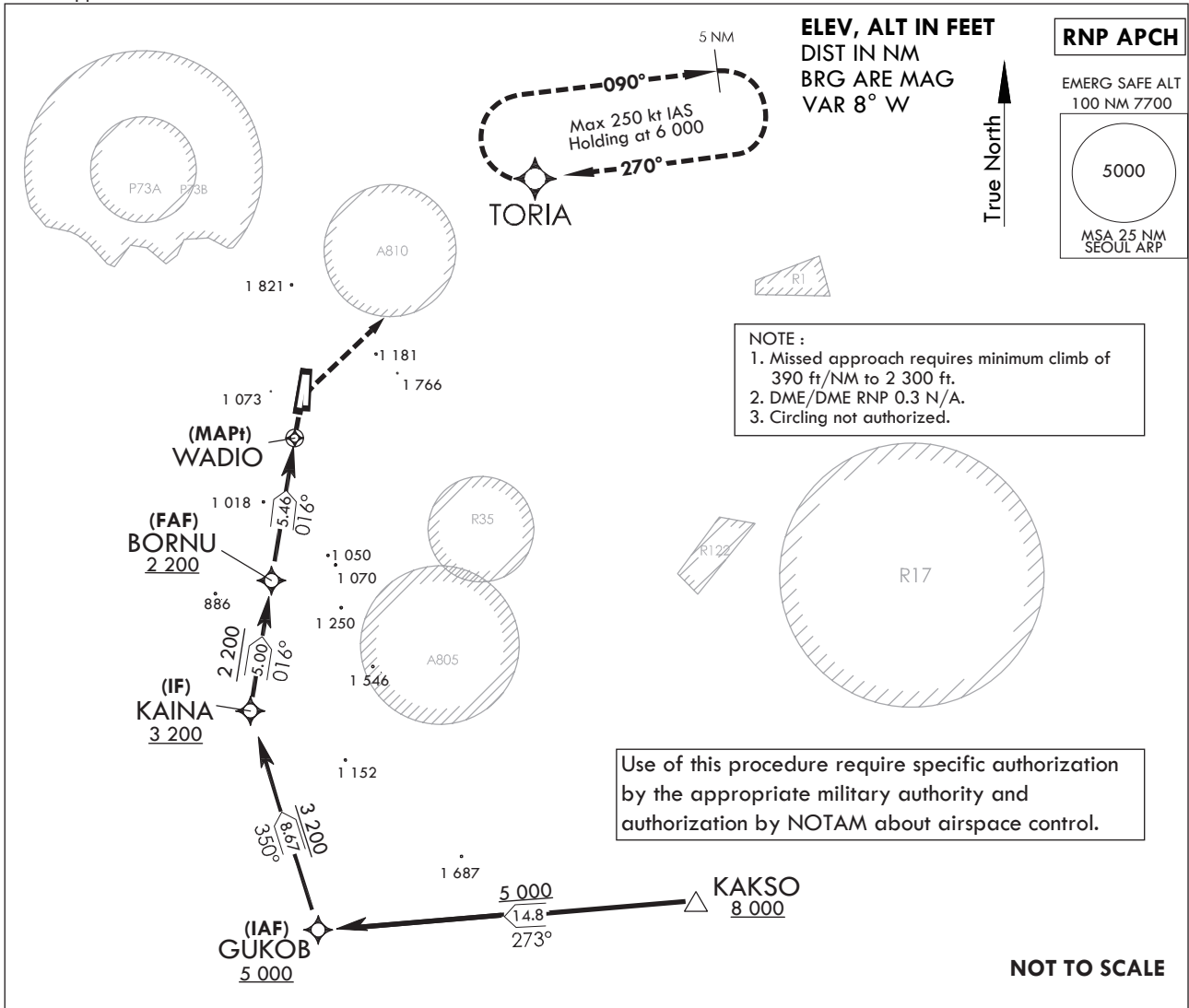
**INSTRUMENT
APPROACH
CHART**

AERODROME ELEV **94** ft
HEIGHTS RELATED TO
THR RWY 02 - ELEV **94** ft

SEOUL APP 123.8 363.8
SEOUL TWR 126.2
236.6 234.5

SEOUL/Seoul (RKSM)
RNP RWY 02

Note : Approach and Circle to land under U.S TERPS.



CATEGORY	A	B	C	D	E
LNAV/ VNAV DA	N/A				N/A
LNAV	1 240-1½ 1 146(1 200-1½)	1 240-1½ 1 146(1 200-1½)	1 240-3 1 146(1 200-3)		N/A
CIRCLING	N/A				

Change : Information of fix name(QUINS → GUKOB).

AERONAUTICAL DATA TABULATION

Instrument Approach Procedure Coding Tables

RNP RWY 02

Serial Number	Path Descriptor	Waypoint Identifier	Fly -Over	Course/Track ° M(° T)	Distance (NM)	Turn Direction	Altitude (ft)	Speed (kt)	Coordinates	VPA /TCH	Navigation specification	Remarks
001	IF	GUKOB	-	-	-	-	+5 000	-	37°06'20.2845"N 127°08'01.9225"E	-	RNP APCH	IAF
002	TF	KAINA	-	349.67/ 341.67	8.67	-	+3 200	-	37°14'34.8404"N 127°04'36.9589"E	-	RNP APCH	IF
003	TF	BORNU	-	16.07/ 8.07	5	-	+2 200	-	37°19'32.2479"N 127°05'29.7485"E	-	RNP APCH	FAF
004	TF	WADIO	Y	16.10/ 8.10	5.46	-	+1 240	-	37°24'57.1290"N 127°06'27.5325"E	3.0°/50	RNP APCH	MAPt
005	DF	TORIA	-	-	-	R	@6 000	-	37°38'02.3748"N 127°21'30.6133"E	-	RNP APCH	-
006	HM	TORIA	-	270.0/262.0	5	R	@6 000	-250	37°38'02.3748"N 127°21'30.6133"E	-	RNP APCH	HOLDING 5 NM LEG

Feeder Routes

Serial Number	Path Descriptor	Waypoint Identifier	Fly -Over	Course/Track ° M(° T)	Distance (NM)	Turn Direction	Altitude (ft)	Speed (kt)	Coordinates	VPA /TCH	Navigation specification	Remarks
001	TF	KAKSO	-	-	-	-	+8 000	-	37°07'45"N 127°26'37"E	-	RNAV 1	EN ROUTE
002	TF	GUKOB	-	272.67/ 264.67	14.93	-	+5 000	-	37°06'20.2845"N 127°08'01.9225"E	-	RNP APCH	IAF

Change : Information of fix name(QUINS → GUKOB).

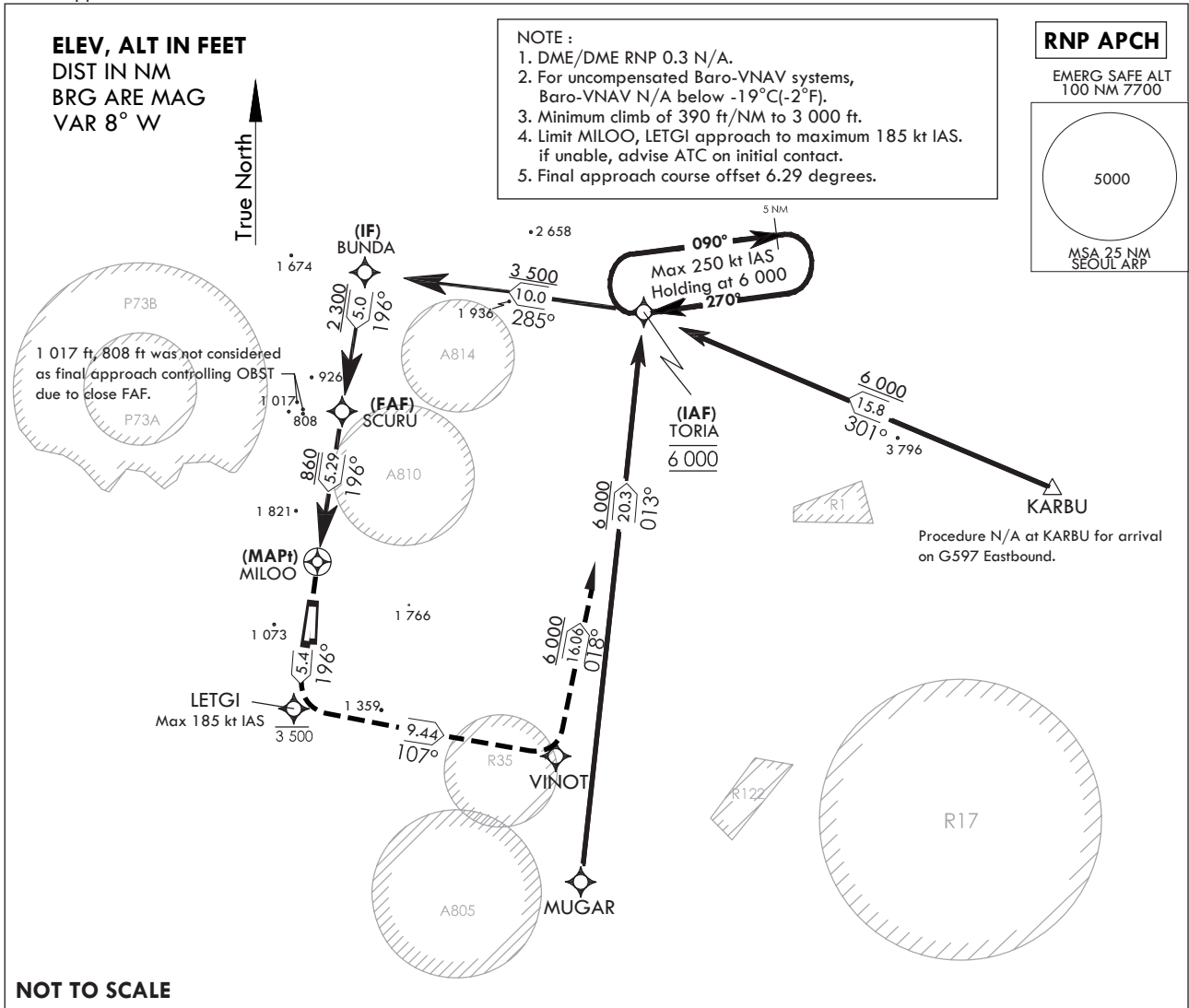
**INSTRUMENT
APPROACH
CHART**

AERODROME ELEV 94 ft
HEIGHTS RELATED TO
THR RWY 19 - ELEV 69 ft

SEOUL APP 123.8 363.8
SEOUL TWR 126.2
236.6 234.5

SEOUL/Seoul (RKSM)
RNP RWY 19

Note : Approach and Circle to land under U.S TERPS.

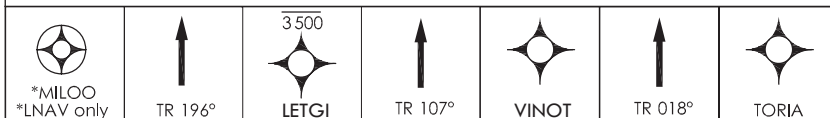


RNP APCH
EMERG SAFE ALT
100 NM 7700

5000

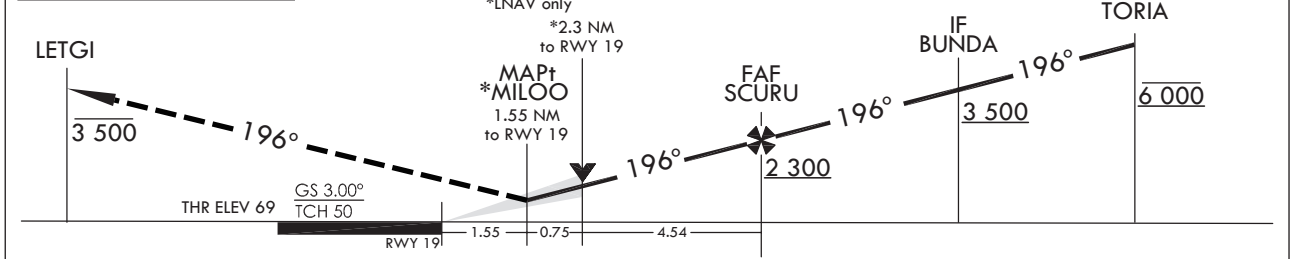
MSA 25 NM
SEOUL ARP

NOT TO SCALE



MISSED APPROACH
Climb on track 196° to cross LETGI at or below 3 500 ft, then climbing left turn to 6 000 ft track 107° to VINOT, then left turn track 018° to TORIA and hold.

TRANSITION ALT 14 000
TRANSITION LVL FL 140



CATEGORY	A	B	C	D	E
LNAV/VNAV DA		711-2½	642(700-2½)		N/A
LNAV MDA		860-2½	791(800-2½)		N/A
CIRCLING	1 020-2½	926(1 000-2½)	1 560-3 1 466(1 500-3)	2 260-3 2 166(2 200-3)	N/A

Change : Information of fix name(NOROO → MUGAR).

SEOUL/Seoul (RKSM)
RNP RWY 19

AERONAUTICAL DATA TABULATION

Instrument Approach Procedure Coding Tables

RNP RWY 19

Serial Number	Path Descriptor	Waypoint Identifier	Fly -Over	Course/Track ° M(° T)	Distance (NM)	Turn Direction	Altitude (ft)	Speed (kt)	Coordinates	VPA /TCH	Navigation specification	Remarks
001	IF	TORIA	-	-	-	-	@6 000	-250	37°38'02.3748"N 127°21'30.6133"E	-	RNP APCH	IAF
002	TF	BUNDA	-	285.1/277.1	10	-	+3 500	-250	37°39'16.2513"N 127°09'00.8555"E	-	RNP APCH	IF
003	TF	SCURU	-	196.1/188.1	5	-	+2 300	-165	37°34'18.8855"N 127°08'07.7311"E	-	RNP APCH	FAF
004	TF	MILOO	Y	196.1/188.1	5.29	-	+860	-165	37°29'04.2951"N 127°07'11.5747"E	3.0°/50	RNP APCH	MAPt
005	TF	LETGI	-	196.1/188.1	5.4	-	-3 500	-185	37°23'43.154"N 127°06'14.3668"E	-	RNP APCH	-
006	TF	VINOT	-	107.1/099.1	9.44	-	6 000	-250	37°22'13.0036"N 127°17'56.0695"E	-	RNP APCH	-
007	TF	TORIA	-	018.2/10.2	16.06	-	+6 000	-250	37°38'02.3748"N 127°21'30.6133"E	-	RNP APCH	-
008	HM	TORIA	-	270.0/262.0	-	R	@6 000	-250	37°38'02.3748"N 127°21'30.6133"E	-	RNP APCH	HOLDING 5 NM LEG

Feeder Routes

Serial Number	Path Descriptor	Waypoint Identifier	Fly -Over	Course/Track ° M(° T)	Distance (NM)	Turn Direction	Altitude (ft)	Speed (kt)	Coordinates	VPA /TCH	Navigation specification	Remarks
001	TF	KARBU	-	-	-	-	-	-	37°31'59"N 127°39'52"E	-	RNAV 1	FEEDER ROUTE
002	HM	TORIA	-	300.6/292.6	15.8	-	+6 000	-250	37°38'02.3748"N 127°21'30.6133"E	-	RNP APCH	HOLDING 5 NM LEG

Feeder Routes

Serial Number	Path Descriptor	Waypoint Identifier	Fly -Over	Course/Track ° M(° T)	Distance (NM)	Turn Direction	Altitude (ft)	Speed (kt)	Coordinates	VPA /TCH	Navigation specification	Remarks
001	TF	MUGAR	-	-	-	-	-	-	37°17'45.54"N 127°19'08.61"E	-	RNAV 1	FEEDER ROUTE
002	HM	TORIA	-	13.3/5.3	20.34	-	+6 000	-250	37°38'02.3748"N 127°21'30.6133"E	-	RNP APCH	HOLDING 5 NM LEG

Change : Information of fix name(NOROO → MUGAR).

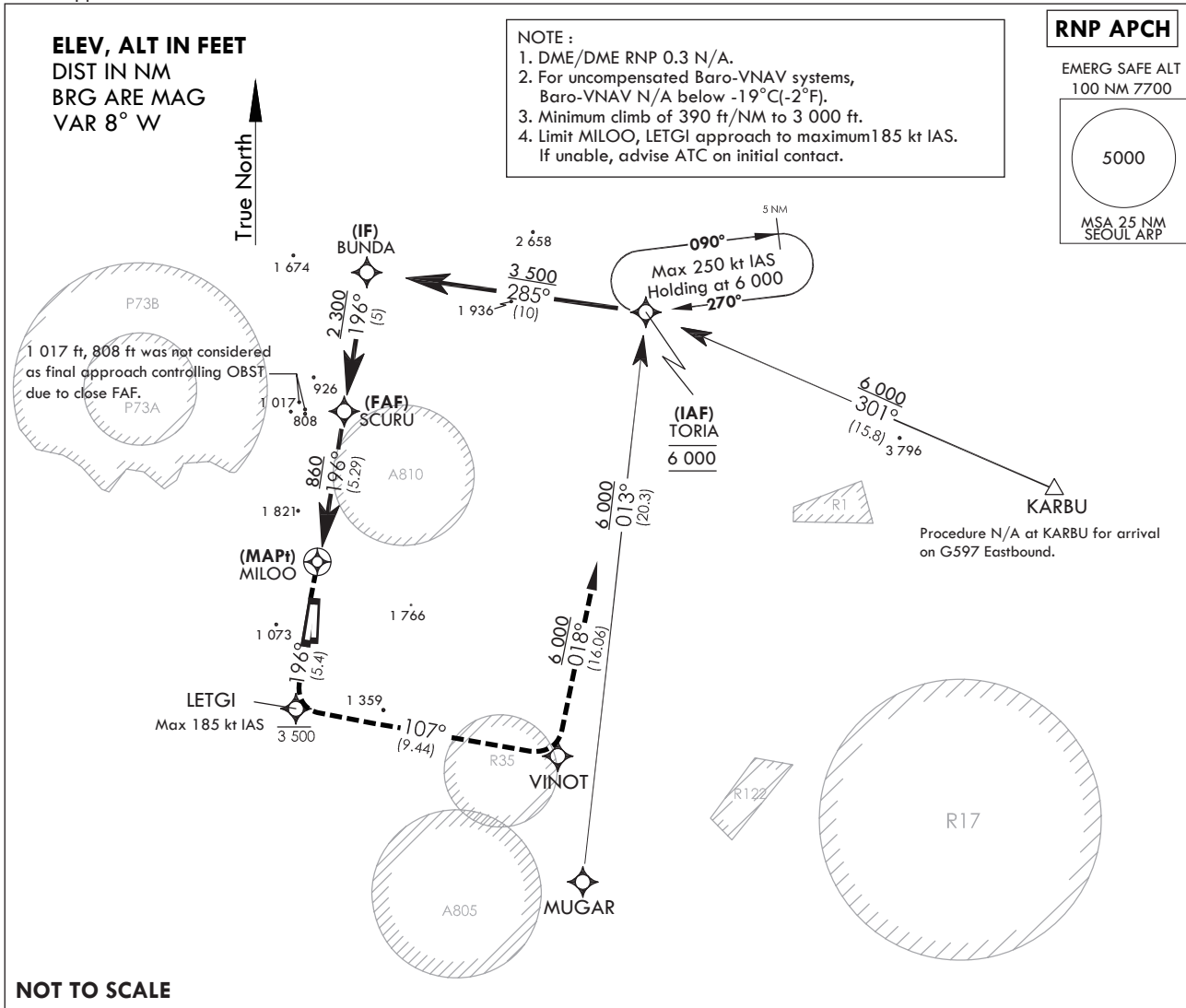
**INSTRUMENT
APPROACH
CHART**

AERODROME ELEV **94** ft
HEIGHTS RELATED TO
THR RWY 20 - ELEV **70** ft

SEOUL APP 123.8 363.8
SEOUL TWR 126.2
236.6 234.5

SEOUL/Seoul (RKSM)
RNP RWY 20

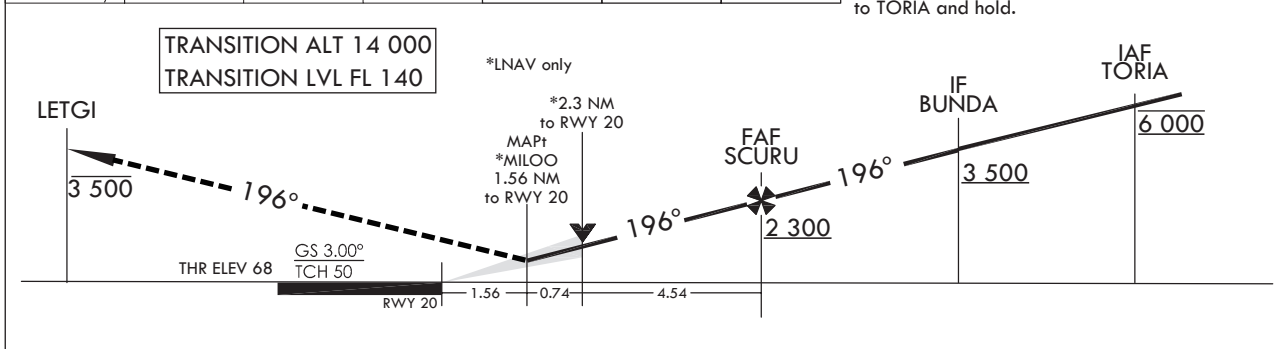
Note : Approach and Circle to land under U.S TERPS.



NOT TO SCALE

*MILOO *LNAV only	TR 196°	LETGI	TR 107°	VINOT	TR 018°	TORIA

MISSED APPROACH
Climb on track 196° to cross LETGI at or below 3 500 ft, then climbing left turn to 6 000 ft track 107° to VINOT, then left turn track 018° to TORIA and hold.



CATEGORY	A	B	C	D	E
LANV/ VNAV DA		711-2½	641(700-2½)		N/A
LNAV MDA		860-2½	790(800-2½)		N/A
CIRCLING	1 020-2½	926(1 000-2½)	1 560-3 1 466(1 500-3)	2 260-3 2 166(2 200-3)	N/A

Change : Information of fix name(NOROO → MUGAR).

SEOUL/Seoul (RKSM)
RNP RWY 20

AERONAUTICAL DATA TABULATION

Instrument Approach Procedure Coding Tables

RNP RWY 20

Serial Number	Path Descriptor	Waypoint Identifier	Fly -Over	Course/Track ° M(° T)	Distance (NM)	Turn Direction	Altitude (ft)	Speed (kt)	Coordinates	VPA /TCH	Navigation specification	Remarks
001	IF	TORIA	-	-	-	-	@6 000	-250	37°38'02.3748"N 127°21'30.6133"E	-	RNP APCH	IAF
002	TF	BUNDA	-	285.1/277.1	1.0	-	+3 500	-250	37°39'16.2513"N 127°09'00.8555"E	-	RNP APCH	IF
003	TF	SCURU	-	196.1/188.1	5	-	+2 300	-165	37°34'18.8855"N 127°08'07.7311"E	-	RNP APCH	FAF
004	TF	MILOO	Y	196.1/188.1	5.29	-	+860	-165	37°29'04.2951"N 127°07'11.5747"E	3.0°/50	RNP APCH	MAPt
005	TF	LETGI	-	196.1/188.1	5.4	-	-3 500	-185	37°23'43.154"N 127°06'14.3668"E	-	RNP APCH	-
006	TF	VINOT	-	107.1/099.1	9.44	-	6 000	-250	37°22'13.0036"N 127°17'56.0695"E	-	RNP APCH	-
007	TF	TORIA	-	018.2/10.2	16.058	-	+6 000	-250	37°38'02.3748"N 127°21'30.6133"E	-	RNP APCH	-
008	HM	TORIA	-	270.0/262.0	-	R	@6 000	-250	37°38'02.3748"N 127°21'30.6133"E	-	RNP APCH	HOLDING 5 NM LEG

Feeder Routes

Serial Number	Path Descriptor	Waypoint Identifier	Fly -Over	Course/Track ° M(° T)	Distance (NM)	Turn Direction	Altitude (ft)	Speed (kt)	Coordinates	VPA /TCH	Navigation specification	Remarks
001	TF	KARBU	-	-	-	-	-	-	37°31'59"N 127°39'52"E	-	RNAV 1	FEEDER ROUTE
002	HM	TORIA	-	300.6/292.6	15.8	-	+6 000	-250	37°38'02.3748"N 127°21'30.6133"E	-	RNP APCH	HOLDING 5 NM LEG

Feeder Routes

Serial Number	Path Descriptor	Waypoint Identifier	Fly -Over	Course/Track ° M(° T)	Distance (NM)	Turn Direction	Altitude (ft)	Speed (kt)	Coordinates	VPA /TCH	Navigation specification	Remarks
001	TF	MUGAR	-	-	-	-	-	-	37°17'45.54"N 127°19'08.61"E	-	RNAV 1	FEEDER ROUTE
002	HM	TORIA	-	13.3/5.3	20.34	-	+6 000	-250	37°38'02.3748"N 127°21'30.6133"E	-	RNP APCH	HOLDING 5 NM LEG

Change : Information of fix name(NOROO → MUGAR).

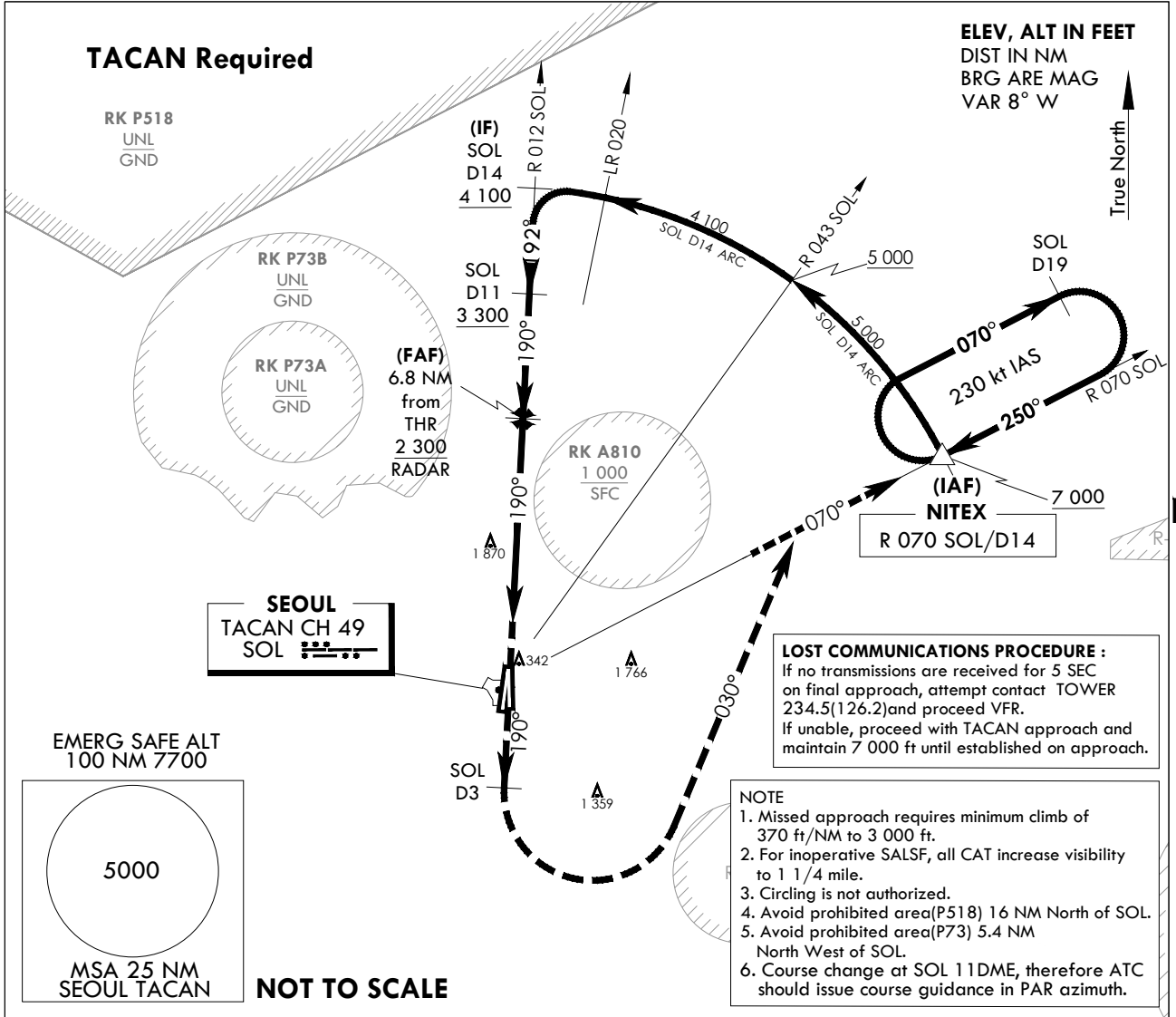
**INSTRUMENT
APPROACH
CHART**

AERODROME ELEV 93 ft
HEIGHTS RELATED TO
THR RWY 19 - ELEV 68 ft

SEOUL APP 123.8 363.8
SEOUL TWR 126.2
234.5 236.6

SEOUL/Seoul(RKSM)
PAR Z
RWY 19

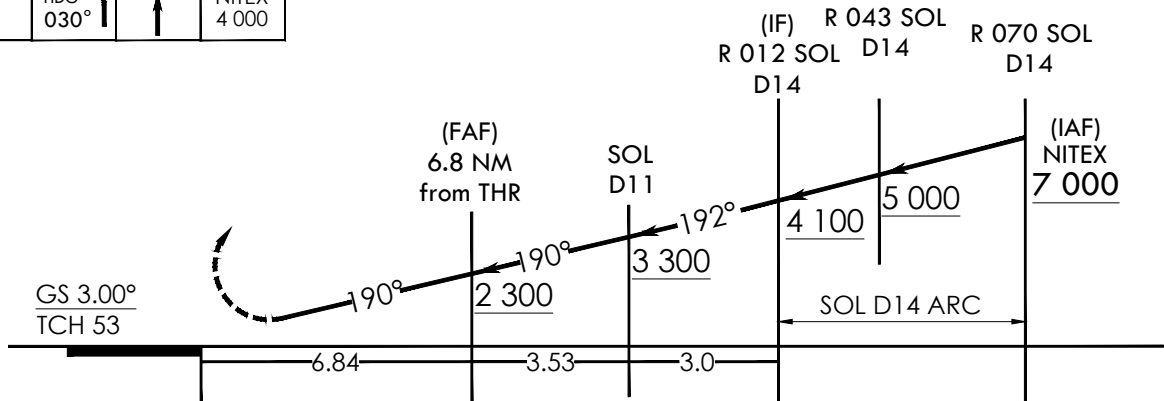
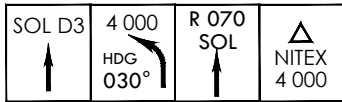
Note : Approach and Circle to land under U.S. TERPS.



TRANSITION ALT 14 000
TRANSITION LVL FL 140

Missed Approach Climb Rate table

KNOTS	60	120	180	240	300	TO
V/V(fpm)	370	740	1 110	1 480	1 850	3 000



MISSED APPROACH

Climb to 4 000 ft via HDG 190° to SOL 3DME and climbing left turn HDG 030° to intercept R 070 SOL, then climb to 7 000 ft on R 070 SOL to NITEX and hold, continue climb-in-holding to 7 000 ft.

CATEGORY	A	B	C	D	E
S-PAR RWY 19		465 / 55	393 (400 - 1)		

Change : Information of fix name(HANJI → NITEX).

INTENTIONALLY

LEFT

BLANK

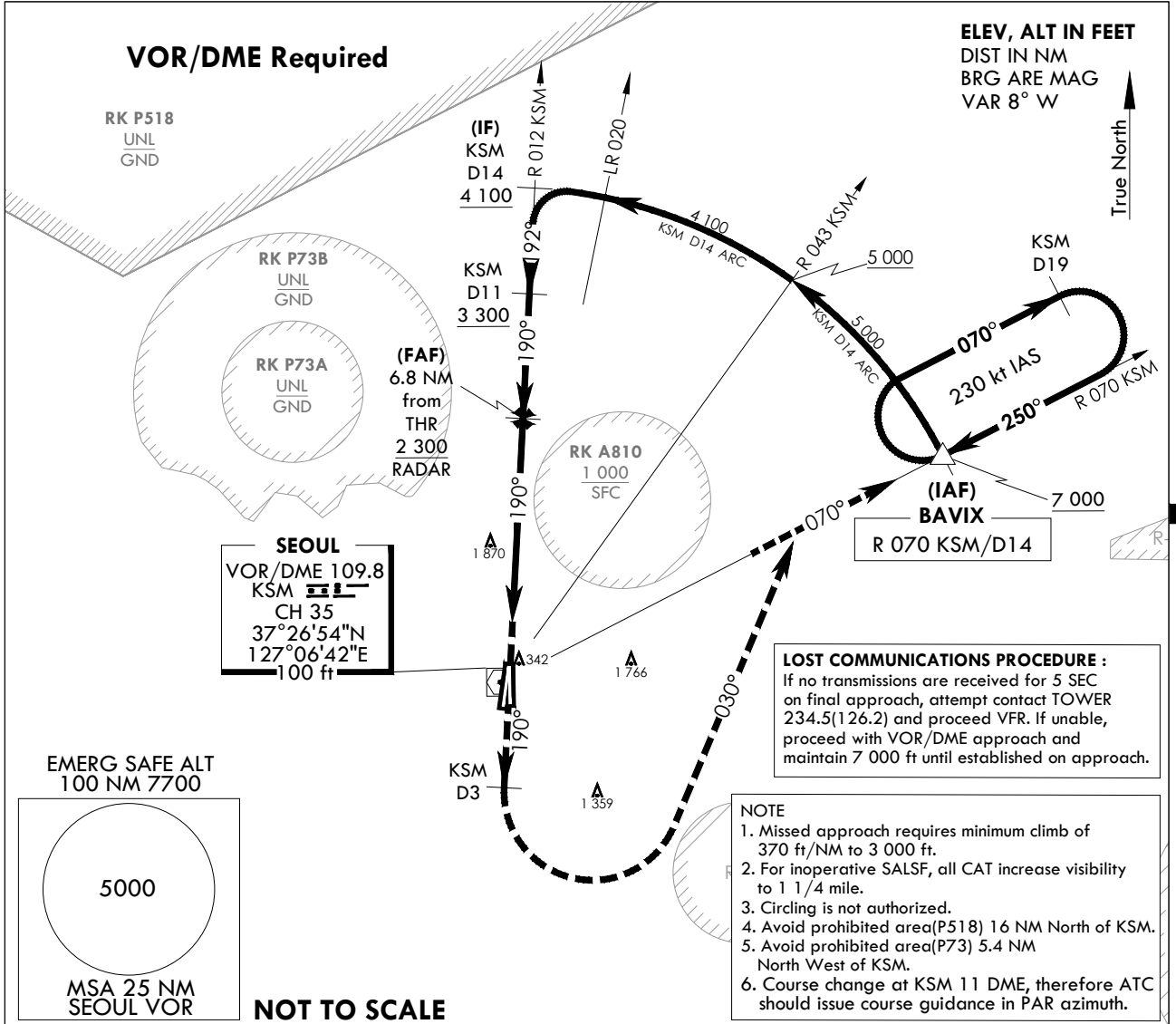
**INSTRUMENT
APPROACH
CHART**

AERODROME ELEV 93 ft
HEIGHTS RELATED TO
THR RWY 19 - ELEV 68 ft

SEOUL APP 123.8 363.8
SEOUL TWR 126.2
234.5 236.6

SEOUL/Seoul(RKSM)
PAR Y
RWY 19

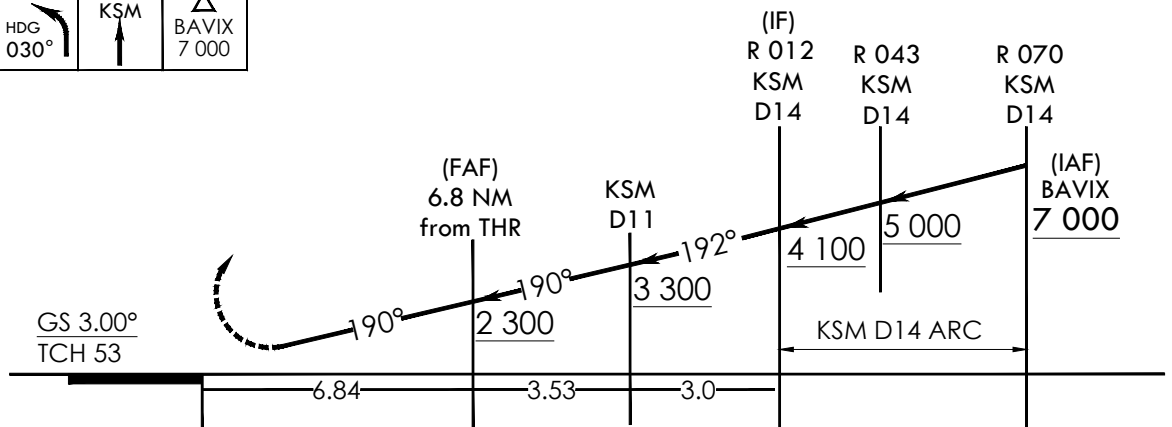
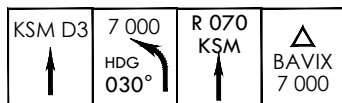
Note : Approach and Circle to land under U.S. TERPS.



TRANSITION ALT 14 000
TRANSITION LVL FL 140

Missed Approach Climb Rate table

KNOTS	60	120	180	240	300	TO
V/V(fpm)	370	740	1 110	1 480	1 850	3 000



CATEGORY	A	B	C	D	E
S-PAR RWY 19		465 / 55	393 (400 - 1)		

Change : Information of fix name(ROONI → BAVIX).

INTENTIONALLY

LEFT

BLANK

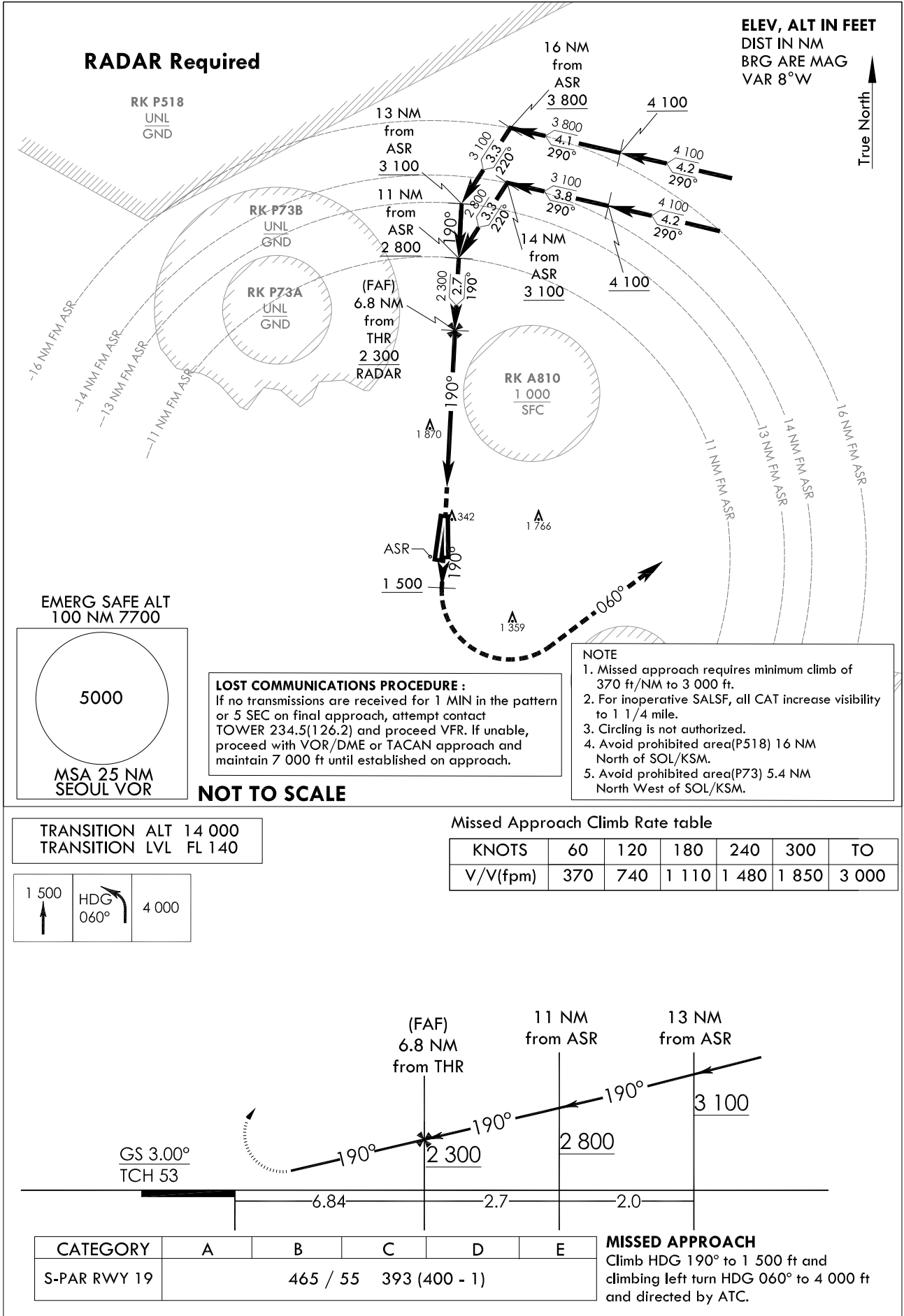
**INSTRUMENT
APPROACH
CHART**

AERODROME ELEV 93 ft
HEIGHTS RELATED TO
THR RWY 19 - ELEV 68 ft

SEOUL APP 123.8 363.8
SEOUL TWR 126.2
234.5 236.6

SEOUL/Seoul(RKSM)
PAR X
RWY 19

Note : Approach and Circle to land under U.S. TERPS.



Change : Information of procedure.

INTENTIONALLY

LEFT

BLANK

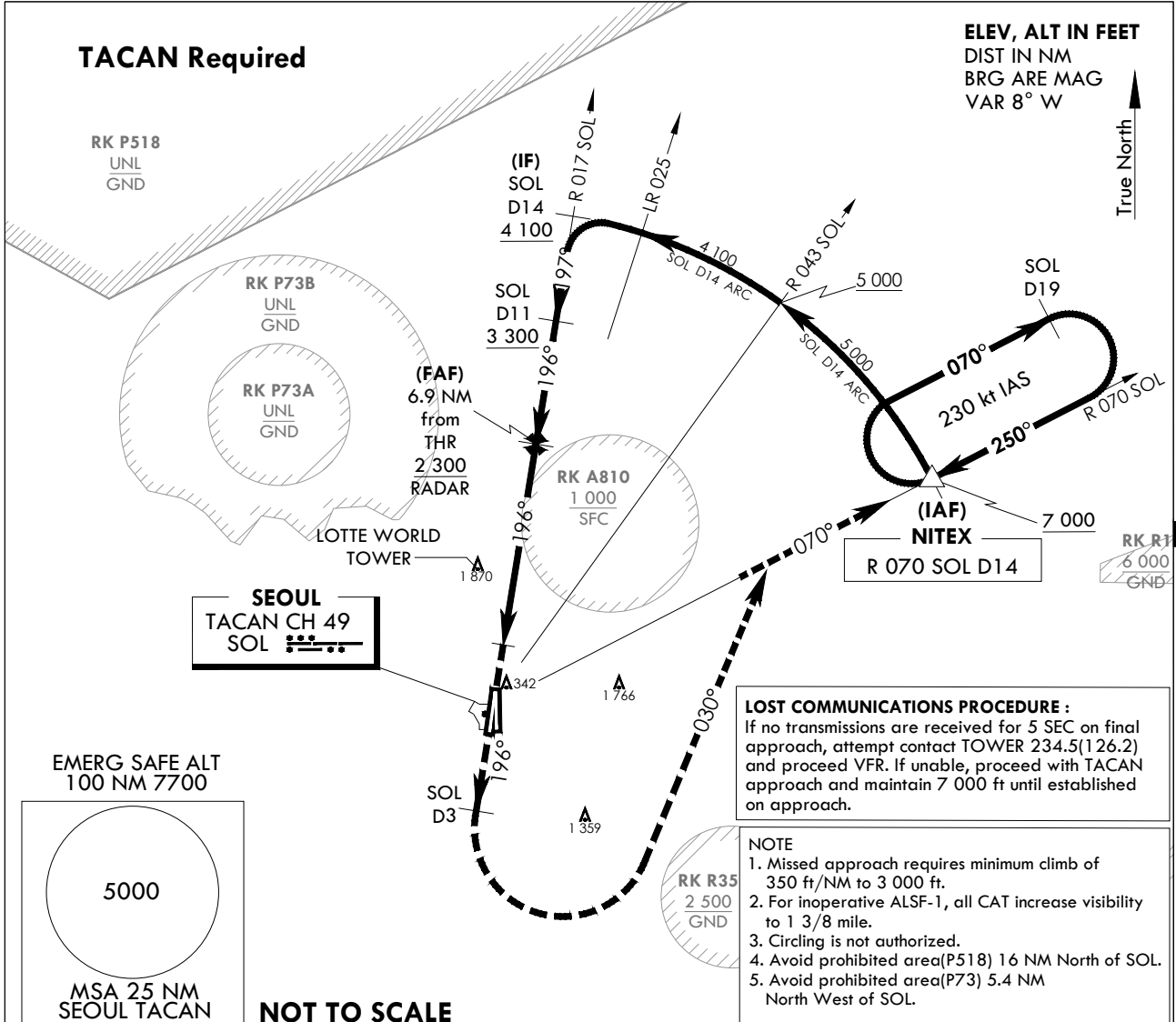
**INSTRUMENT
APPROACH
CHART**

AERODROME ELEV 93 ft
HEIGHTS RELATED TO
THR RWY 20 - ELEV 68 ft
HIGHEST ELEV TDZ 69 ft

SEOUL APP 123.8 363.8
SEOUL TWR 126.2
234.5 236.6

SEOUL/Seoul(RKSM)
PAR Z
RWY 20

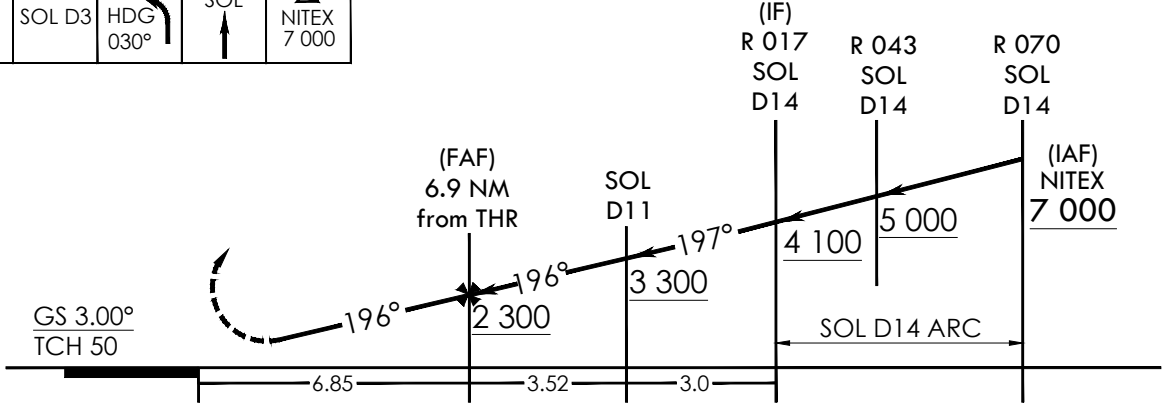
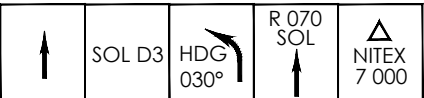
Note : Approach and Circle to land under U.S. TERPS.



TRANSITION ALT 14 000
TRANSITION LVL FL 140

Missed Approach Climb Rate table

KNOTS	60	120	180	240	300	TO
V/V(fpm)	350	700	1 050	1 400	1 750	3 000



NOTE : VGSI and PAR glidepath not coincident : (VGSI Angle 3.00° / TCH 61).

MISSED APPROACH
Climb to 4 000 ft via HDG 196° to SOL 3 DME and climbing left turn HDG 030° to intercept R 070 SOL, then climb to 7 000 ft on R 070 SOL to NITEX and hold, continue climb-in-holding to 7 000 ft.

CATEGORY	A	B	C	D	E
S-PAR RWY 20		473 / 45	404 (400 - 7/8)		N/A

Change : Information of fix name(HANJI → NITEX).

INTENTIONALLY

LEFT

BLANK

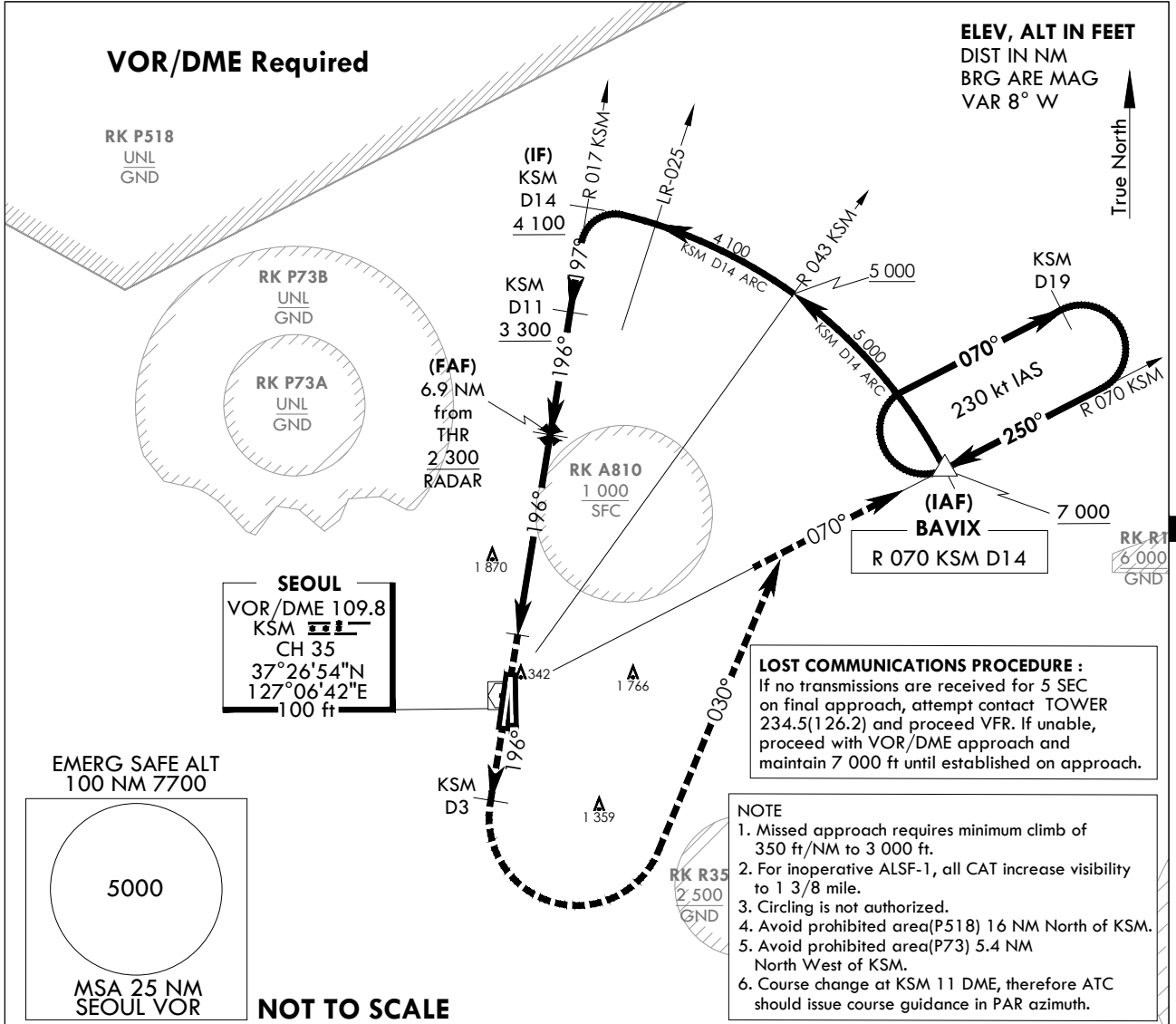
**INSTRUMENT
APPROACH
CHART**

AERODROME ELEV 93 ft
HEIGHTS RELATED TO
THR RWY 20 - ELEV 68 ft
HIGHEST ELEV TDZ 69 ft

SEOUL APP 123.8 363.8
SEOUL TWR 126.2
234.5 236.6

SEOUL/Seoul(RKSM)
PAR Y
RWY 20

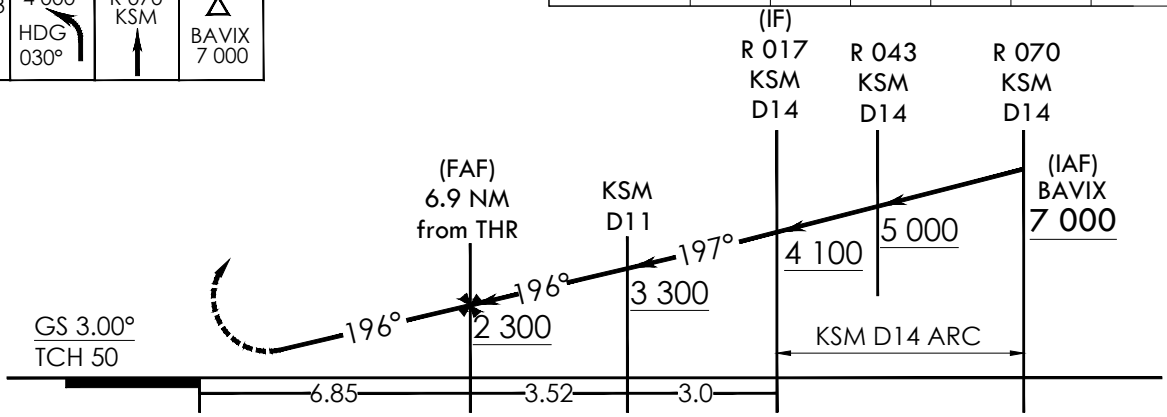
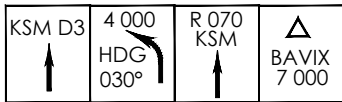
Note : Approach and Circle to land under U.S. TERPS.



TRANSITION ALT 14 000
TRANSITION LVL FL 140

Missed Approach Climb Rate table

KNOTS	60	120	180	240	300	TO
V/V(fpm)	350	700	1 050	1 400	1 750	3 000



NOTE : VGSI and PAR glidepath not coincident : (VGSI Angle 3.00° / TCH 61).

MISSED APPROACH

Climb to 4 000 ft via HDG 196° to KSM 3 DME and climbing left turn HDG 030° to intercept R 070 KSM, then climb to 7 000 ft on R 070 KSM to BAVIX and hold, continue climb-in-holding to 7 000 ft.

CATEGORY	A	B	C	D	E
S-PAR RWY 20	473 / 45	404 (400 - 7/8)			N/A

Change : Information of fix name(ROONI → BAVIX).

INTENTIONALLY

LEFT

BLANK

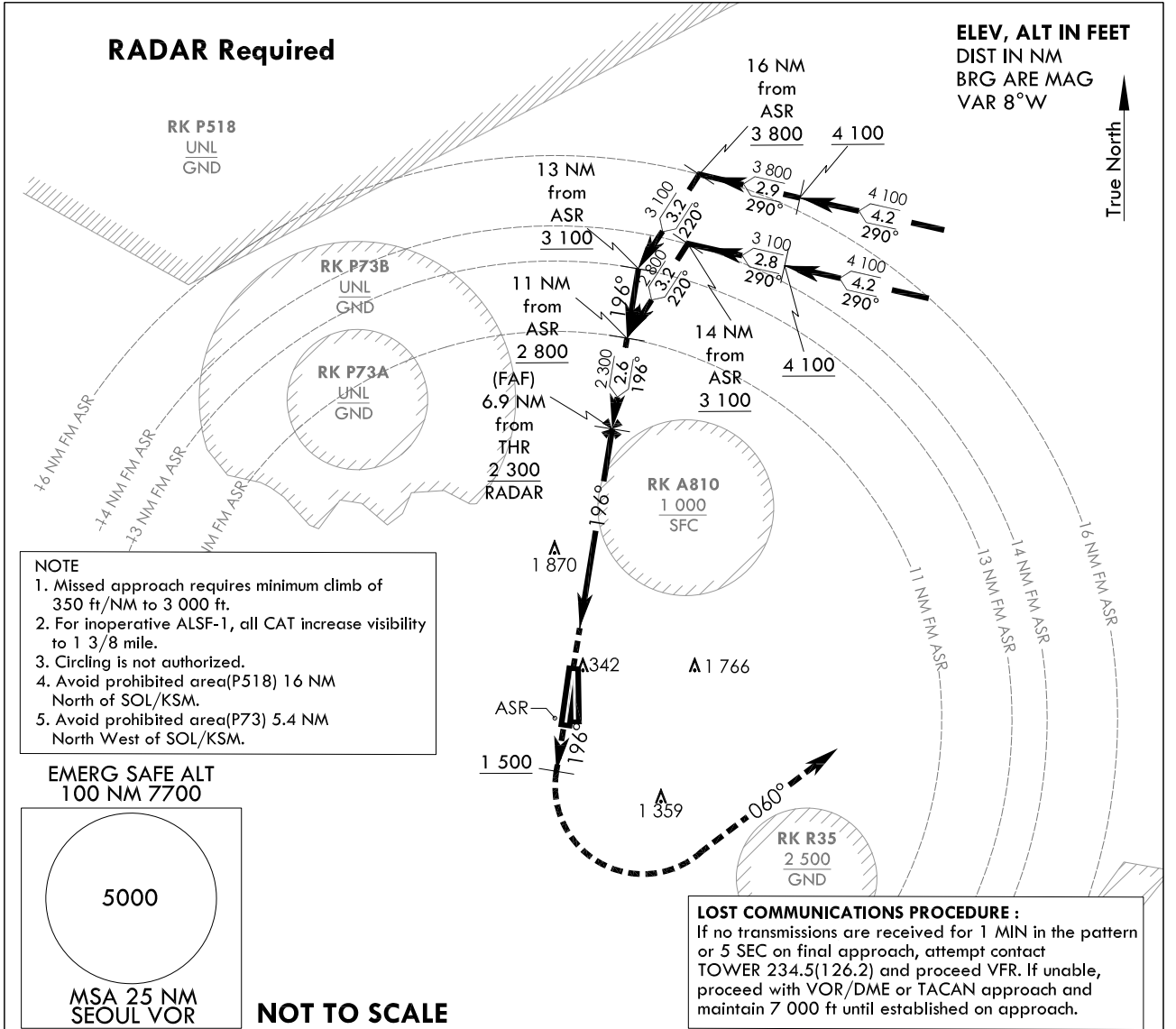
**INSTRUMENT
APPROACH
CHART**

AERODROME ELEV 93 ft
HEIGHTS RELATED TO
THR RWY 20 - ELEV 68 ft
HIGHEST ELEV TDZ 69 ft

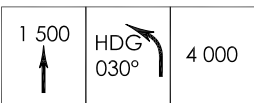
SEOUL APP 123.8 363.8
SEOUL TWR 126.2
234.5 236.6

SEOUL/Seoul(RKSM)
PAR X
RWY 20

Note : Approach and Circle to land under U.S. TERPS.

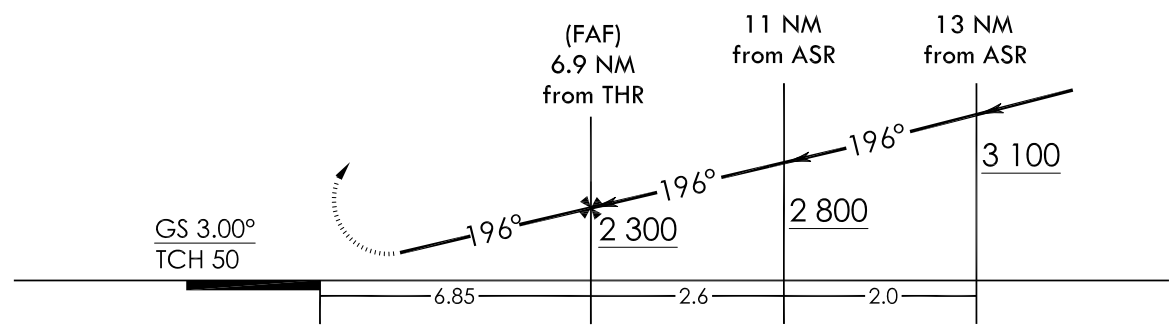


TRANSITION ALT 14 000
TRANSITION LVL FL 140



Missed Approach Climb Rate table

KNOTS	60	120	180	240	300	TO
V/V(fpm)	350	700	1 050	1 400	1 750	3 000



NOTE : VGSI and PAR glidepath not coincident : (VGSI Angle 3.00° / TCH 61).

CATEGORY	A	B	C	D	E
S-PAR RWY 20		473 / 45	404 (400 - 7/8)		

MISSED APPROACH
Climb HDG 196° to 1 500 ft and climbing left turn HDG 060° to 4 000 ft and directed by ATC.

Change : Information of procedure.

INTENTIONALLY

LEFT

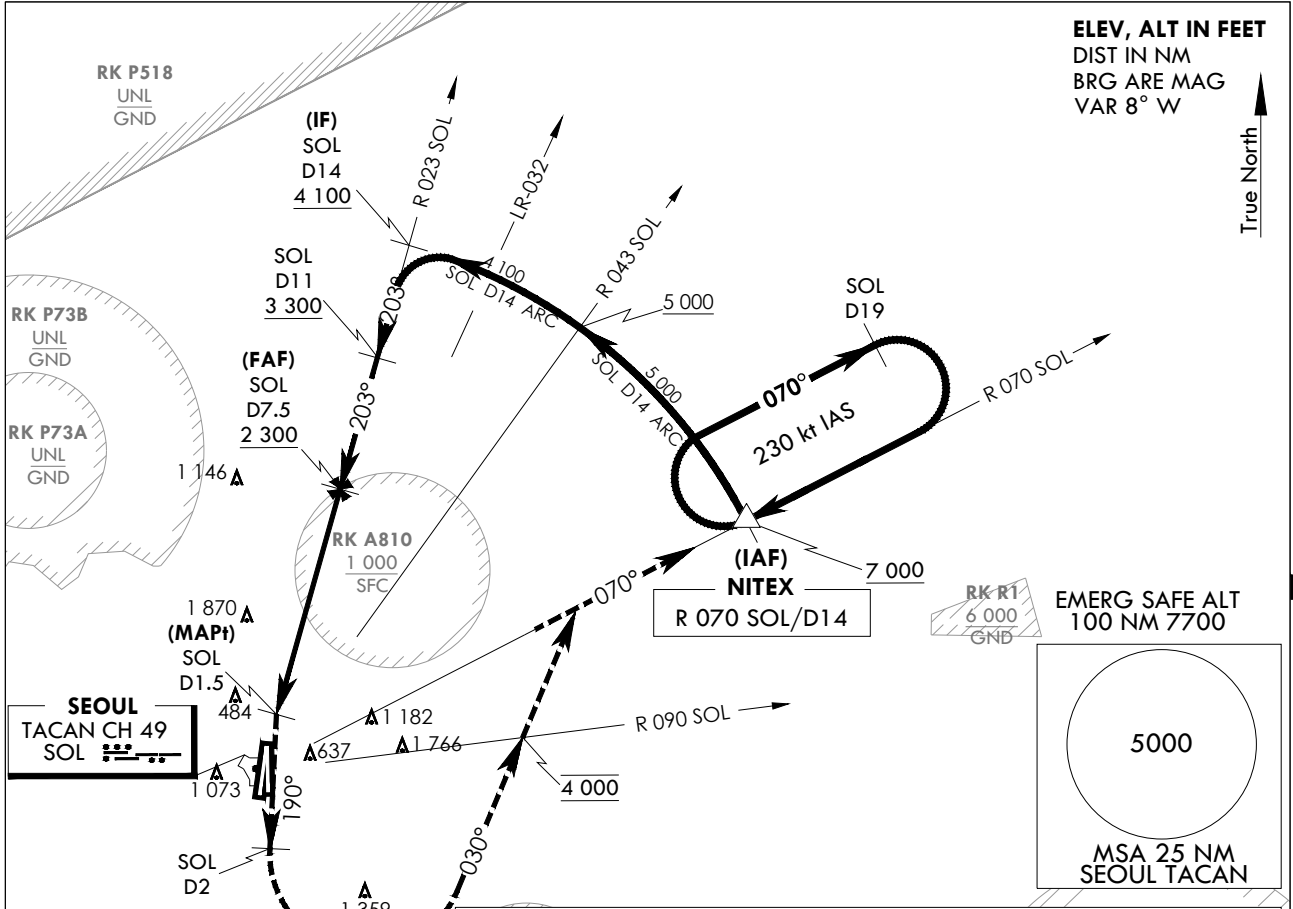
BLANK

**INSTRUMENT
APPROACH
CHART**

AERODROME ELEV 93 ft
HEIGHTS RELATED TO
THR RWY 19 - ELEV 68 ft

SEOUL APP 123.8 363.8
SEOUL TWR 126.2
234.5 236.6

SEOUL/Seoul(RKSM)
TACAN
RWY 19



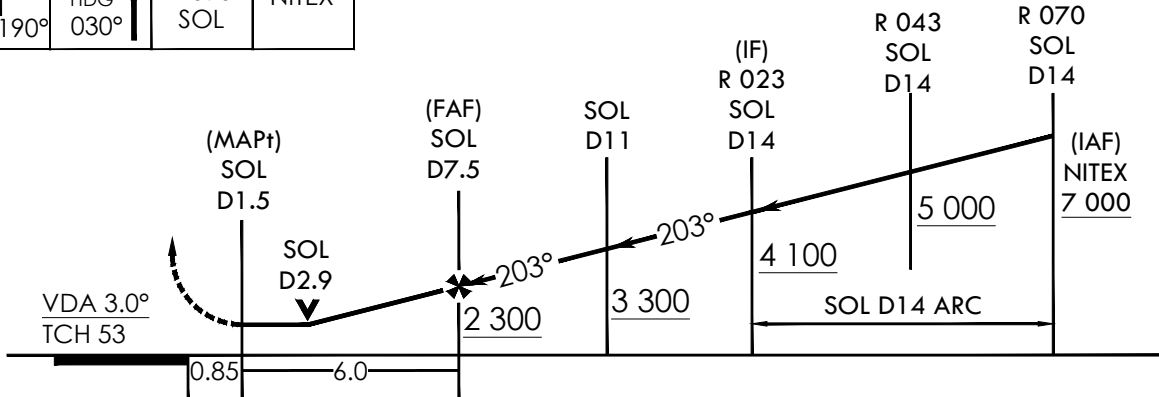
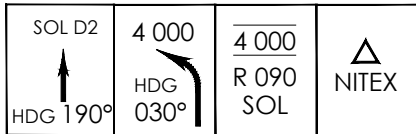
NOT TO SCALE

- NOTE :**
1. Circling not authorized West of RWY 19 - RWY 01/02.
 2. For inoperative SALSF, increase S-TAC RWY 19 CAT A visibility to RVR 5 500 and CAT B visibility to RVR 6 000 and CAT C, D visibility to 2 miles.
 3. Missed approach requires minimum climb of 390 ft/NM to 3 000 ft.
 4. Avoid prohibited area (P518) 16 NM North of SOL.
 5. Avoid prohibited area (P73) 5.4 NM North West of SOL.
 6. 1 146 ft was not considered as final approach controlling OBST due to close to PFAF.

TRANSITION ALT 14 000
TRANSITION LVL FL 140

Missed Approach Climb Rate table

KNOTS	60	120	180	240	300	TO
V/V(fpm)	390	770	1 150	1 530	1 910	3 000



CATEGORY	A	B	C	D	E
S-TAC RWY 19	820 / 40 748 (800 - 3/4)	820 / 55 748 (800 - 1)	820 - 1 7/8 748 (800 - 1 7/8)		N/A
Circling	1 020 - 1 1/4 927(1 000-1 1/4)		1 560 - 3 1 467(1 500-3)	2 260 - 3 2 167(2 200-3)	N/A

MISSED APPROACH :
Climb HDG 190° to SOL 2 DME and climbing left turn HDG 030° to cross R 090 SOL at 4 000 ft, then R 070 SOL to NITEX and hold, continue climb-in-holding to 7 000 ft.

Change : Information of fix name(HANJI → NITEX).

INTENTIONALLY

LEFT

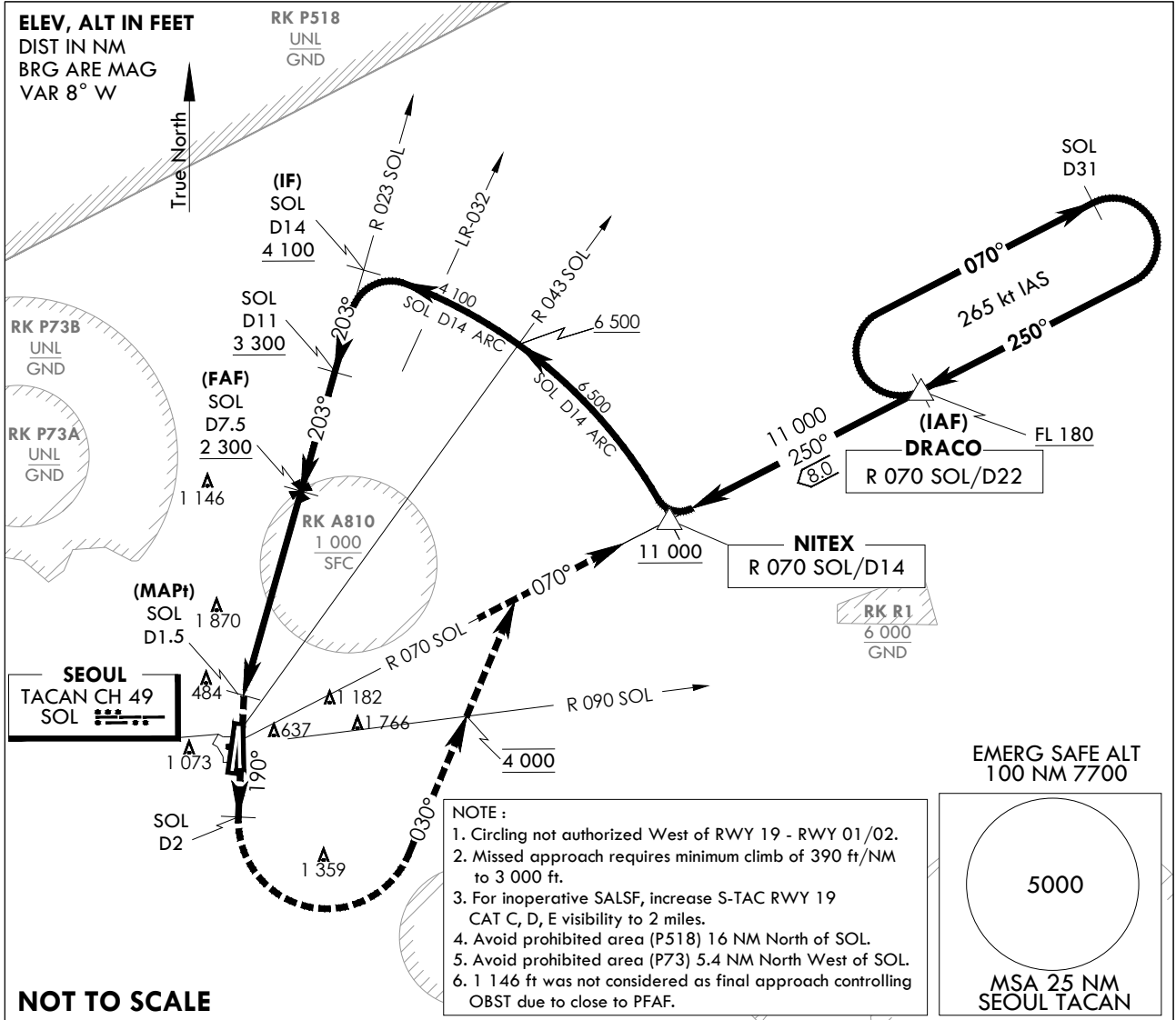
BLANK

**INSTRUMENT
APPROACH
CHART**

AERODROME ELEV 93 ft
HEIGHTS RELATED TO
THR RWY 19 - ELEV 68 ft

SEOUL APP 123.8 363.8
SEOUL TWR 126.2
234.5 236.6

SEOUL/Seoul(RKSM)
HI-TACAN
RWY 19

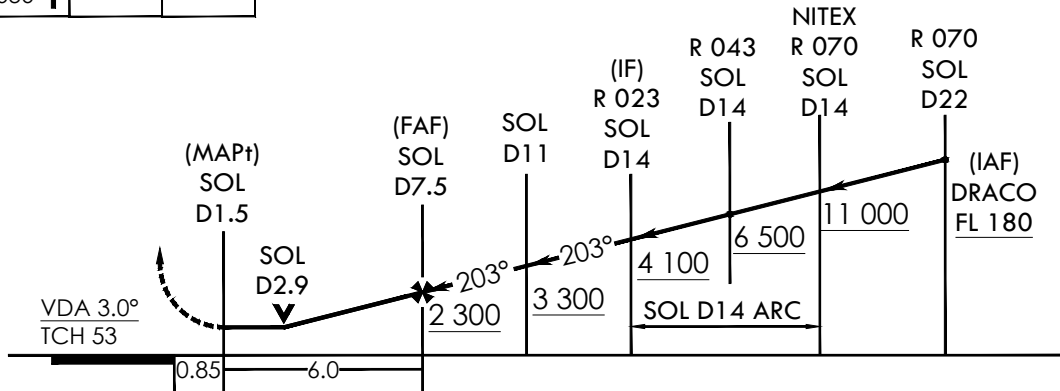
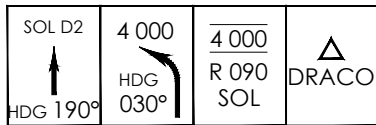


NOT TO SCALE

TRANSITION ALT 14 000
TRANSITION LVL FL 140

Missed Approach Climb Rate table

KNOTS	60	120	180	240	300	TO
V/V(fpm)	390	770	1 150	1 530	1 910	3 000



CATEGORY	A	B	C	D	E
S-TAC RWY 19	N/A			820 - 1 $\frac{7}{8}$ 748 (800 - 1 $\frac{7}{8}$)	
Circling	N/A		1 560 - 3 1 467(1 500-3)	2 260 - 3 2 167(2 200-3)	

MISSED APPROACH

Climb HDG 190° to SOL 2 DME and climbing left turn HDG 030° to cross R 090 SOL at 4 000 ft, then R 070 SOL to DRACO and hold, continue climb-in-holding to FL 180.

Change : Information of fix name(HANJI → NITEX).

INTENTIONALLY

LEFT

BLANK

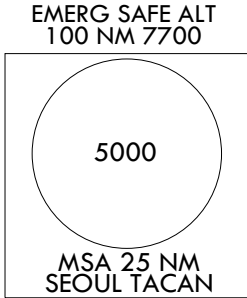
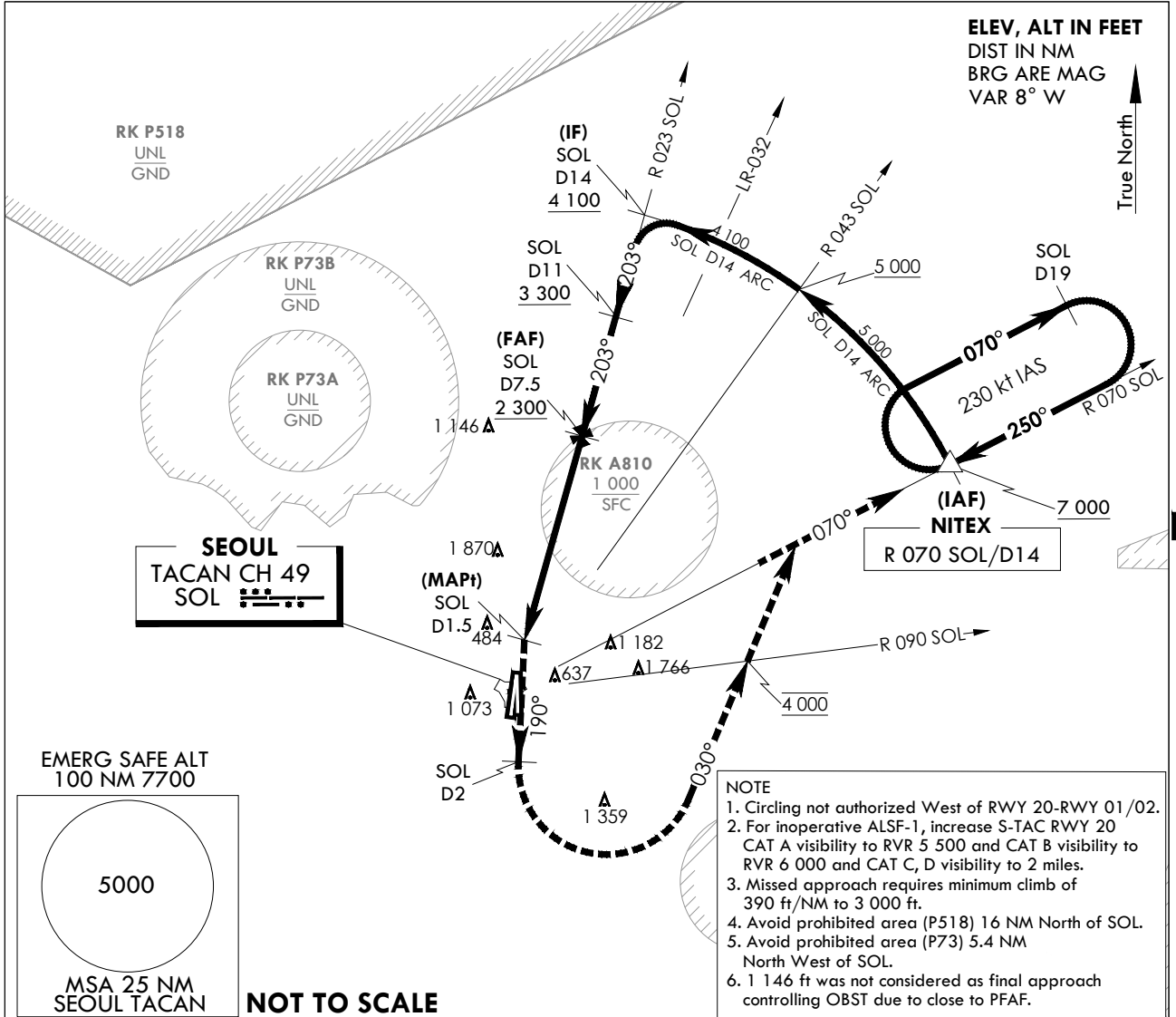
**INSTRUMENT
APPROACH
CHART**

AERODROME ELEV 93 ft
HEIGHTS RELATED TO
THR RWY 20 - ELEV 68 ft
HIGHEST ELEV TDZ 69 ft

SEOUL APP 123.8 363.8
SEOUL TWR 126.2
234.5 236.6

**SEOUL/Seoul(RKSM)
TACAN
RWY 20**

Note : Approach and Circle to land under U.S. TERPS.

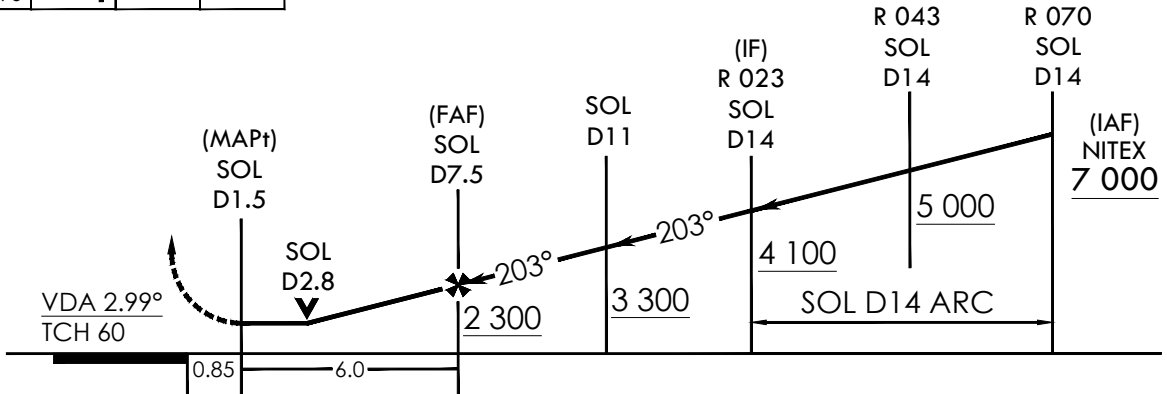


- NOTE**
1. Circling not authorized West of RWY 20-RWY 01/02.
 2. For inoperative ALSF-1, increase S-TAC RWY 20 CAT A visibility to RVR 5 500 and CAT B visibility to RVR 6 000 and CAT C, D visibility to 2 miles.
 3. Missed approach requires minimum climb of 390 ft/NM to 3 000 ft.
 4. Avoid prohibited area (P518) 16 NM North of SOL.
 5. Avoid prohibited area (P73) 5.4 NM North West of SOL.
 6. 1 146 ft was not considered as final approach controlling OBST due to close to PFAF.

TRANSITION ALT 14 000
TRANSITION LVL FL 140

Missed Approach Climb Rate table

KNOTS	60	120	180	240	300	TO
V/V(fpm)	390	770	1 150	1 530	1 910	3 000



CATEGORY	A	B	C	D	E
S-TAC RWY 20	820 / 35 751 (800 - 5/8)	820 / 40 751 (800 - 3/8)	820 - 1 3/4 751 (800 - 1 1/4)		N/A
Circling	1 020 - 1 1/4 927(1 000-1 1/4)		1 560 - 3 1 467(1 500-3)	2 260 - 3 2 167(2 200-3)	N/A

MISSED APPROACH
Climb HDG 190° to SOL 2 DME and climbing left turn HDG 030° to cross R 090 SOL at 4 000 ft, then R 070 SOL to NITEX and hold, continue climb-in-holding to 7 000 ft.

Change : Information of fix name(HANJI → NITEX).

INTENTIONALLY

LEFT

BLANK

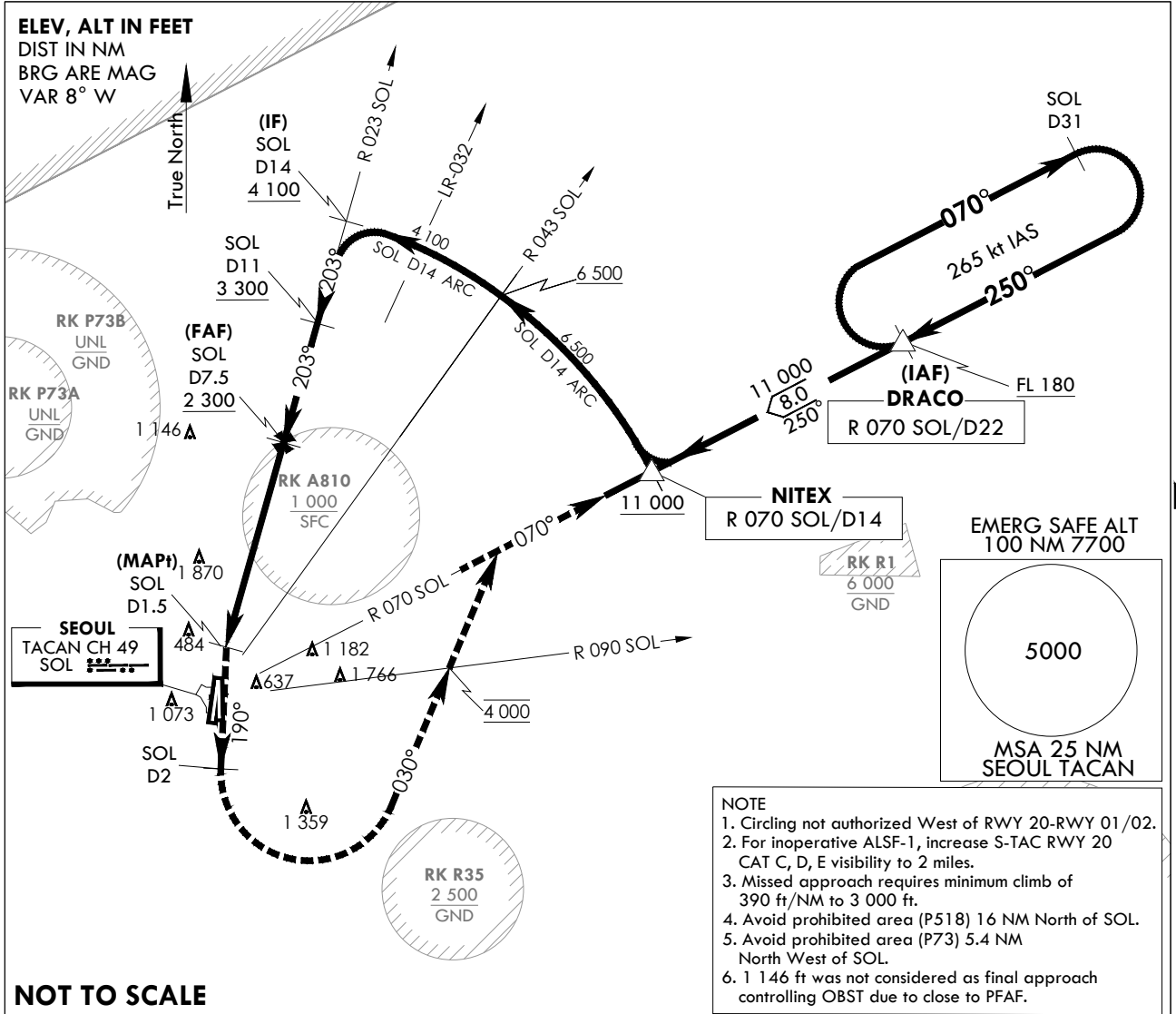
**INSTRUMENT
APPROACH
CHART**

AERODROME ELEV 93 ft
HEIGHTS RELATED TO
THR RWY 20 - ELEV 68 ft
HIGHEST ELEV TDZ 69 ft

SEOUL APP 123.8 363.8
SEOUL TWR 126.2
234.5 236.6

SEOUL/Seoul(RKSM)
HI-TACAN
RWY 20

Note : Approach and Circle to land under U.S. TERPS.



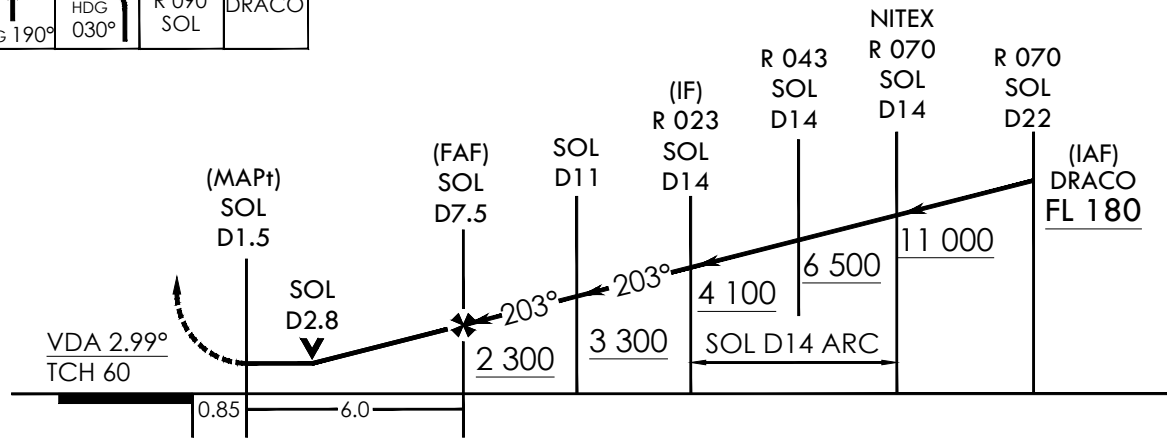
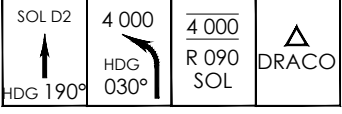
NOT TO SCALE

- NOTE**
1. Circling not authorized West of RWY 20-RWY 01/02.
 2. For inoperative ALSF-1, increase S-TAC RWY 20 CAT C, D, E visibility to 2 miles.
 3. Missed approach requires minimum climb of 390 ft/NM to 3 000 ft.
 4. Avoid prohibited area (P518) 16 NM North of SOL.
 5. Avoid prohibited area (P73) 5.4 NM North West of SOL.
 6. 1 146 ft was not considered as final approach controlling OBST due to close to PFAF.

TRANSITION ALT 14 000
TRANSITION LVL FL 140

Missed Approach Climb Rate table

KNOTS	60	120	180	240	300	TO
V/V(fpm)	390	770	1 150	1 530	1 910	3 000



CATEGORY	A	B	C	D	E
S-TAC RWY 20	N/A			820 - 1 3/4 751 (800 - 1 3/4)	
Circling	N/A		1 560 - 3 1 467(1 500-3)	2 260 - 3 2 167(2 200-3)	

MISSED APPROACH
Climb HDG 190° to SOL 2 DME and climbing left turn HDG 030° to cross R 090 SOL at 4 000 ft, then R 070 SOL to DRACO and hold, continue climb-in-holding to FL 180.

Change : Information of fix name(HANJI → NITEX).

INTENTIONALLY

LEFT

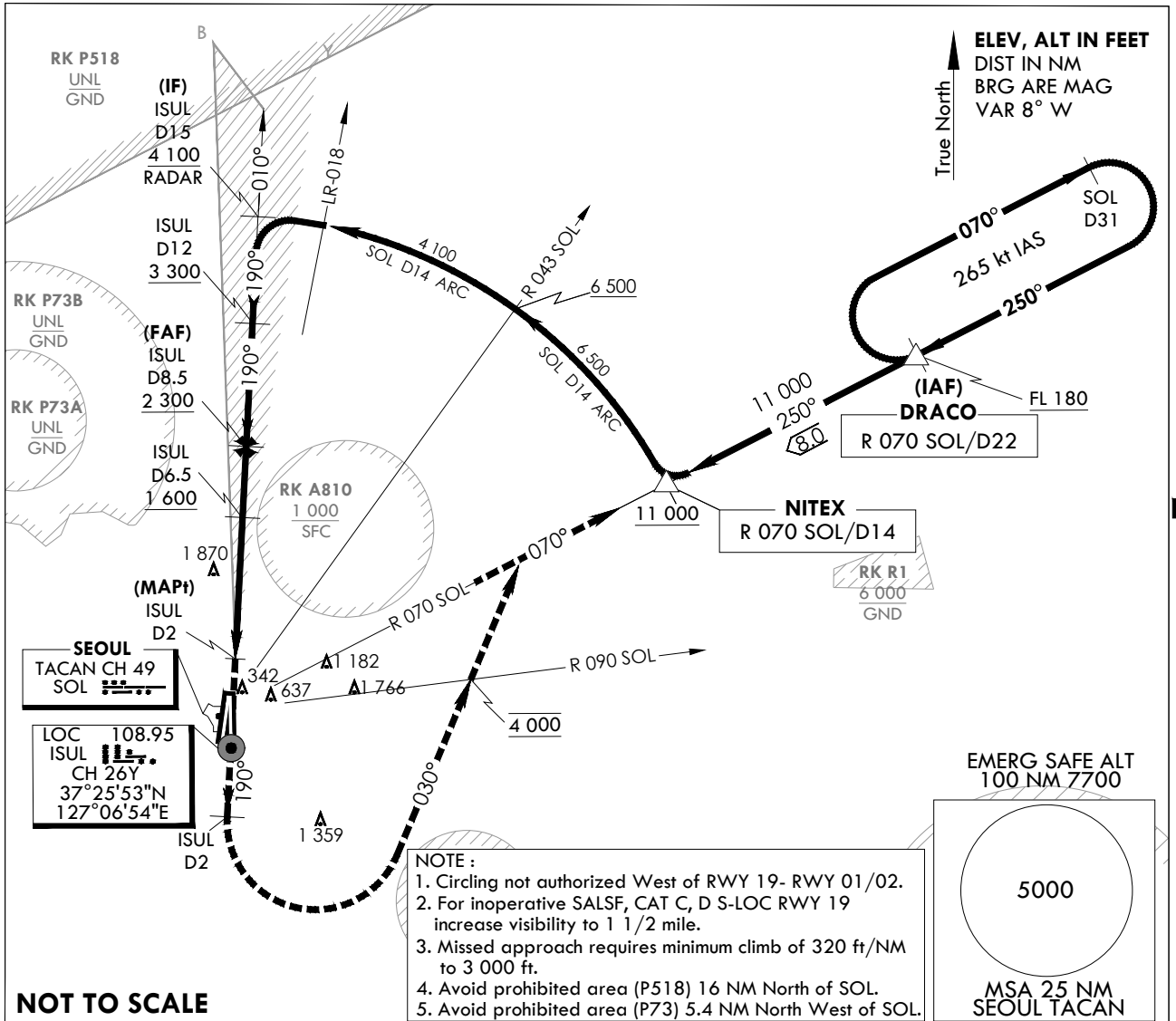
BLANK

**INSTRUMENT
APPROACH
CHART**

AERODROME ELEV 93 ft
HEIGHTS RELATED TO
THR RWY 19 - ELEV 68 ft

SEOUL APP 123.8 363.8
SEOUL TWR 126.2
234.5 236.6

SEOUL/Seoul(RKSM)
HI-LOC/DME
RWY 19

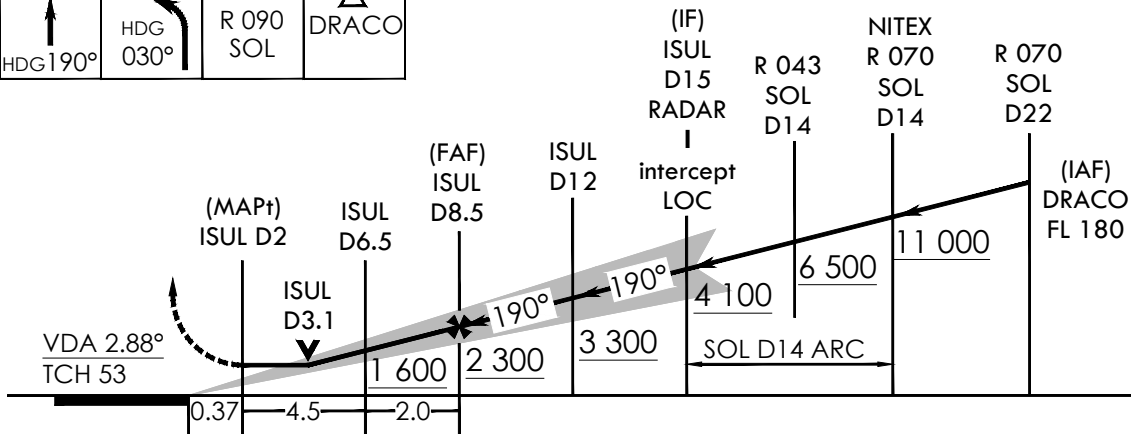
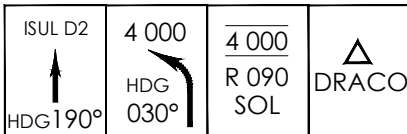


NOT TO SCALE

TRANSITION ALT 14 000
TRANSITION LVL FL 140

Missed Approach Climb Rate table

KNOTS	60	120	180	240	300	TO
V/V(fpm)	320	640	960	1 280	1 590	3 000



CATEGORY	A	B	C	D	E
S-LOC RWY 19	N/A		600 - 1 1/4	528 (600 - 1 1/4)	
Circling	N/A		1 560 - 3 1 467(1 500-3)	2 260 - 3 2 167(2 200-3)	

MISSED APPROACH

Climb HDG 190° to ISUL 2 DME and climbing left turn HDG 030° to cross R 090 SOL TACAN at 4 000 ft, then R 070 SOL to DRACO and hold, continue climb-in-holding to FL 180.

Change : Information of fix name(HANJI → NITEX).

INTENTIONALLY

LEFT

BLANK

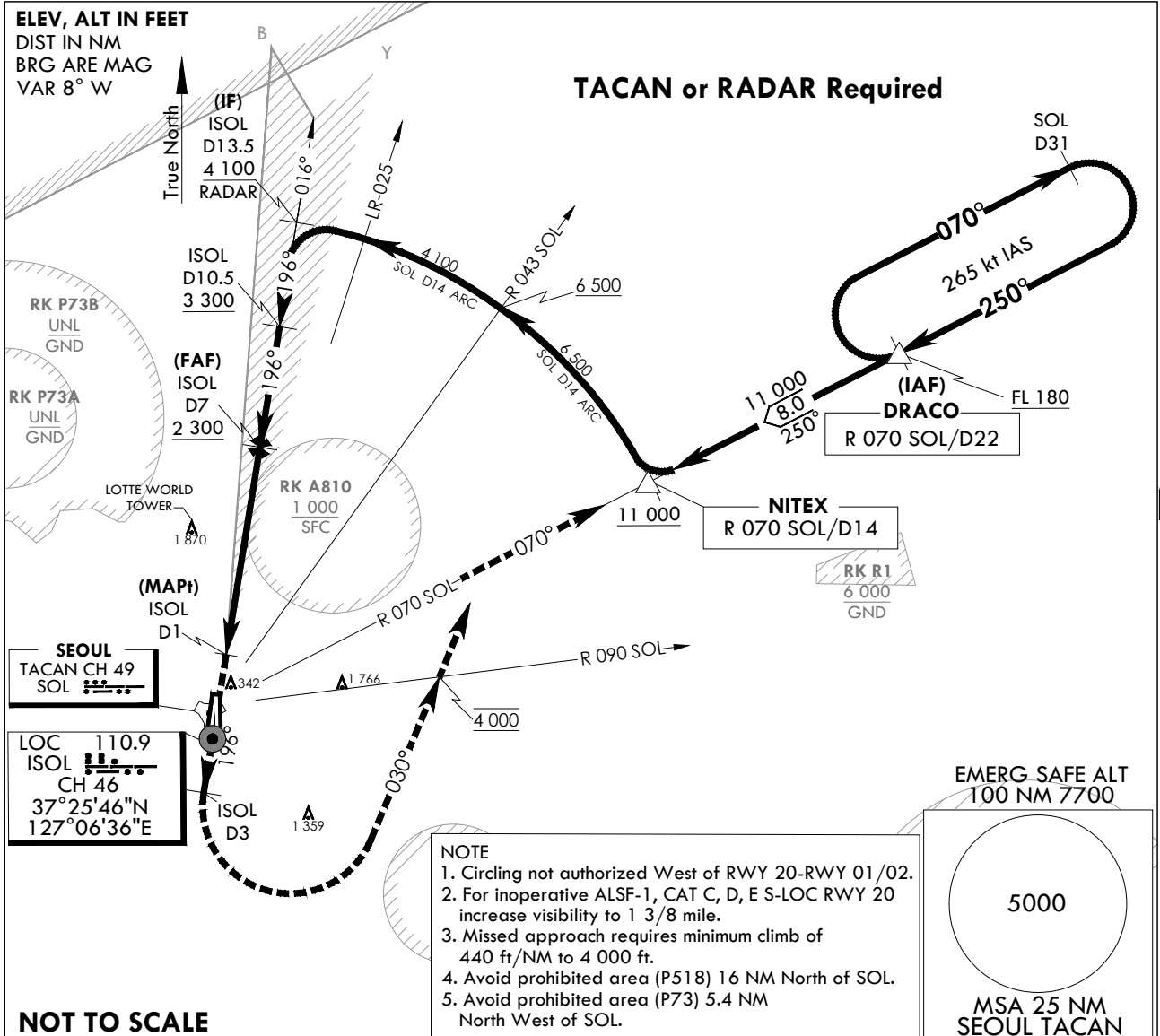
**INSTRUMENT
APPROACH
CHART**

AERODROME ELEV 93 ft
HEIGHTS RELATED TO
THR RWY 20 - ELEV 68 ft
HIGHEST ELEV TDZ 69 ft

SEOUL APP 123.8 363.8
SEOUL TWR 126.2
234.5 236.6

SEOUL/Seoul(RKSM)
HI-LOC/DME
RWY 20

Note : Approach and Circle to land under U.S. TERPS.

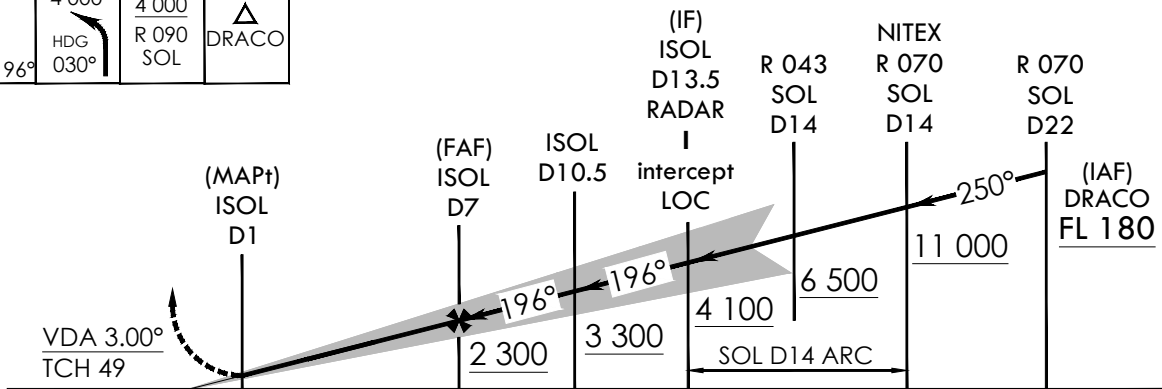
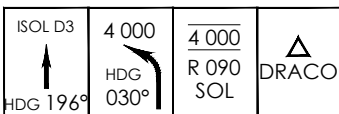


NOT TO SCALE

TRANSITION ALT 14 000
TRANSITION LVL FL 140

Missed Approach Climb Rate table

KNOTS	60	120	180	240	300	TO
V/V(fpm)	440	880	1 320	1 760	2 200	4 000



NOTE : VGS1 and LOC decent angle not coincident : (VGS1 Angle 3.00° / TCH 61).

CATEGORY	A	B	C	D	E
S-LOC RWY 20	N/A			520/45 451 (500 - 5/8)	
Circling	N/A		1 560 - 3 1 467(1 500-3)	2 260 - 3 2 167(2 200-3)	

MISSED APPROACH

Climb HDG 196° to ISOL 3 DME and climbing left turn HDG 030° to cross R 090 SOL at 4 000 ft, then R 070 SOL to DRACO and hold, continue climb-in-holding to FL 180.

Change : Information of fix name(HANJI → NITEX).

INTENTIONALLY

LEFT

BLANK

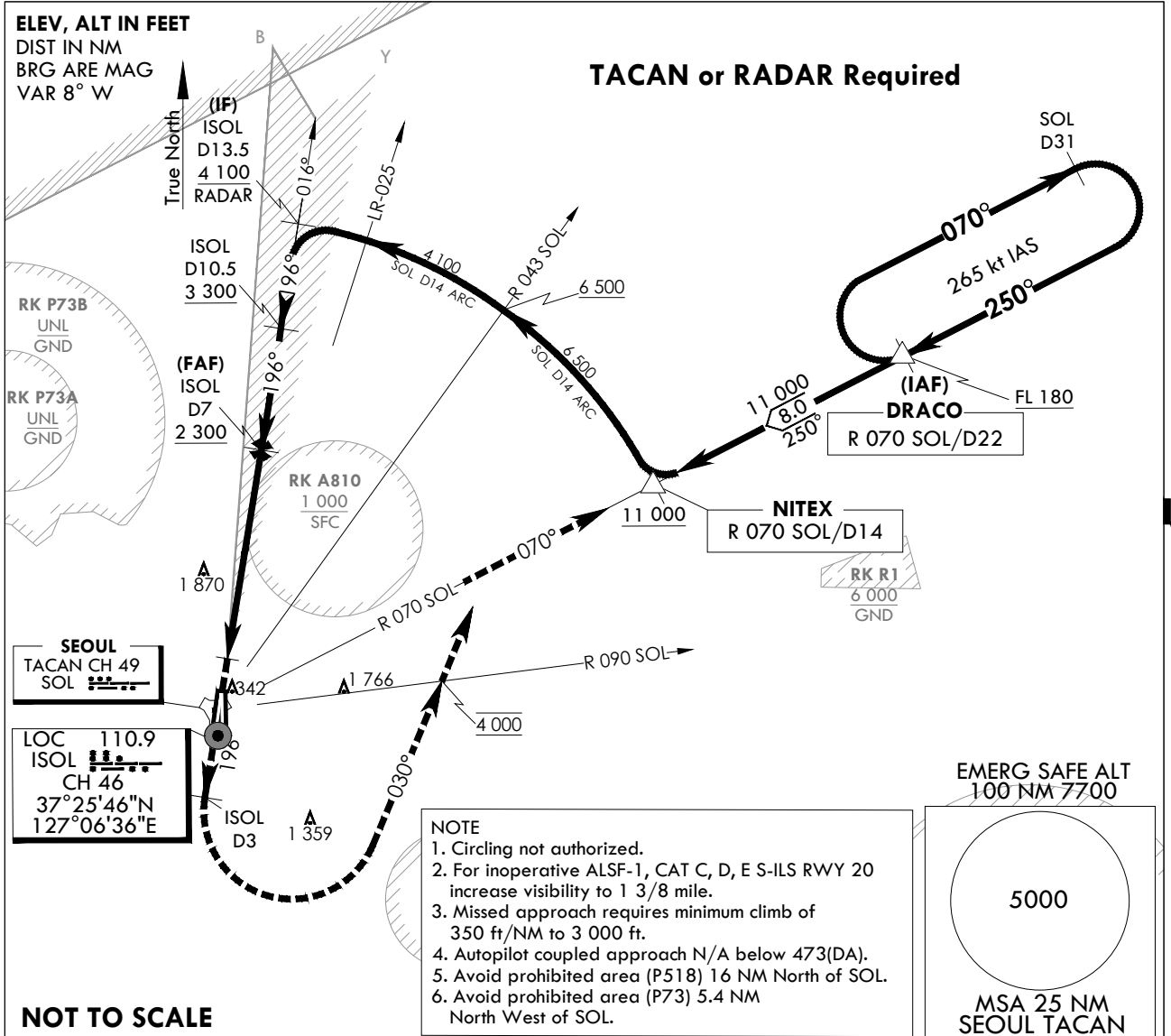
**INSTRUMENT
APPROACH
CHART**

AERODROME ELEV 93 ft
HEIGHTS RELATED TO
THR RWY 20 - ELEV 68 ft
HIGHEST ELEV TDZ 69 ft

SEOUL APP 123.8 363.8
SEOUL TWR 126.2
234.5 236.6

SEOUL/Seoul(RKSM)
HI-ILS
RWY 20

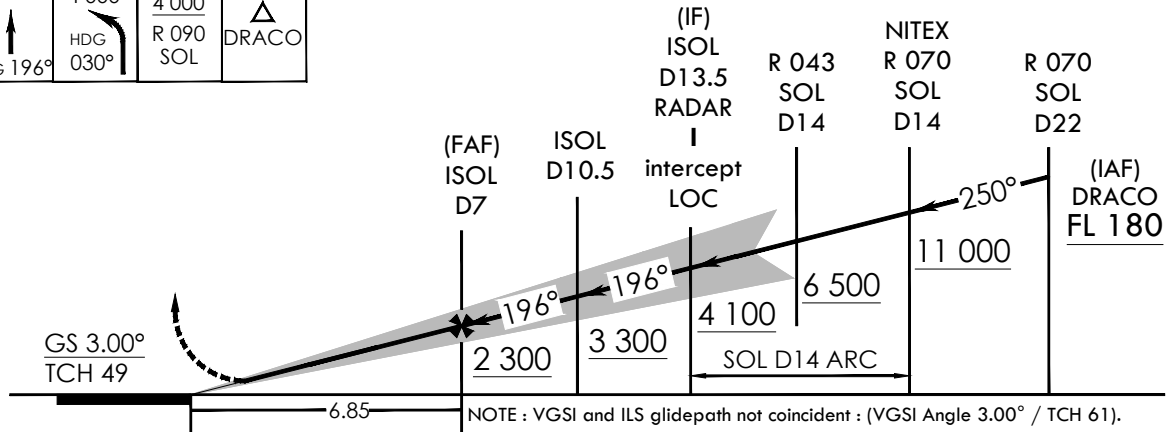
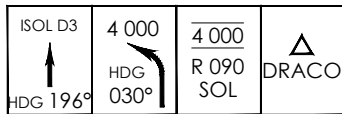
Note : Approach and Circle to land under U.S. TERPS.



TRANSITION ALT 14 000
TRANSITION LVL FL 140

Missed Approach Climb Rate table

KNOTS	60	120	180	240	300	TO
V/V(fpm)	350	700	1 050	1 400	1 750	3 000



CATEGORY	A	B	C	D	E
S-ILS RWY 20	N/A			473/45 404 (400 - 7/8)	

MISSED APPROACH

Climb HDG 196° to ISOL 3 DME and climbing left turn HDG 030° to cross R 090 SOL at 4 000 ft, then R 070 SOL to DRACO and hold, continue climb-in-holding to FL 180.

Change : Information of fix name(HANJI → NITEX).

INTENTIONALLY

LEFT

BLANK